

Spearhead

TWIGA Reach Mower

555/600/655T

555FR/600FR



Edition 2.0 – March 2011

Part No. 8999057

PARTS MANUAL

Spearhead TWIGA

Contents

Ordering Your Parts.....	3
A Frame.....	4
Tank.....	6
Slew Post.....	8
Lift Frame.....	10
Tank Lid.....	12
Rear Panel.....	13
Stabiliser Brackets.....	14
Oil Cooler.....	16
Main Arm – 555/600/655T.....	18
Dipper Arm – 555/600.....	20
Tie Bar – 555/600/655T.....	22
Head Mount Bracket.....	23
Head Crowd Bracket.....	24
Hydraulic Drive.....	26
Break Back Valve.....	27
Hydraulic Proportional Controls.....	28
Electric Proportional Pro Pilot Controls.....	30
Hydraulic Proportional Pro Pilot Controls.....	32
Cable Rotor Valve.....	34
Control Valve.....	36
Head Float Valve.....	38
Arm Float Valve.....	39
Telescopic Dipper Arm – 655T.....	40
Forward Reach Knuckle.....	42
Dipper arm – 555FR/600FR.....	43
Autopilot.....	44
Hydraulic Rams.....	46
Hydraulic Rams.....	48
Electric Rotor Valve.....	50

Spearhead TWIGA

Contents cont.

SDS100 Valve Mount plate	51
Lift Ram Shut Off Valve	52
Decals	53
Safety Decals	54
Cab Guard	55
Axle Mount Sub Frame	56
Light Circuit	57
Gearbox	58
PTO	59

Ordering Your Part's

When ordering parts please refer to your parts list to help your dealer with your order.

Part number and quantity
Description
Machine model number
Serial number of the machine
Delivery instructions (e.g. next day).

Delivery is normally via carrier direct to your dealer. Please check with your dealer for stock availability and arrangement of dispatch. Ensure you or your dealer has sufficient cover for parts requirement outside factory hours.

When ordering your seal kits please quote both codes stamped on the base of the cylinder.

Important Note

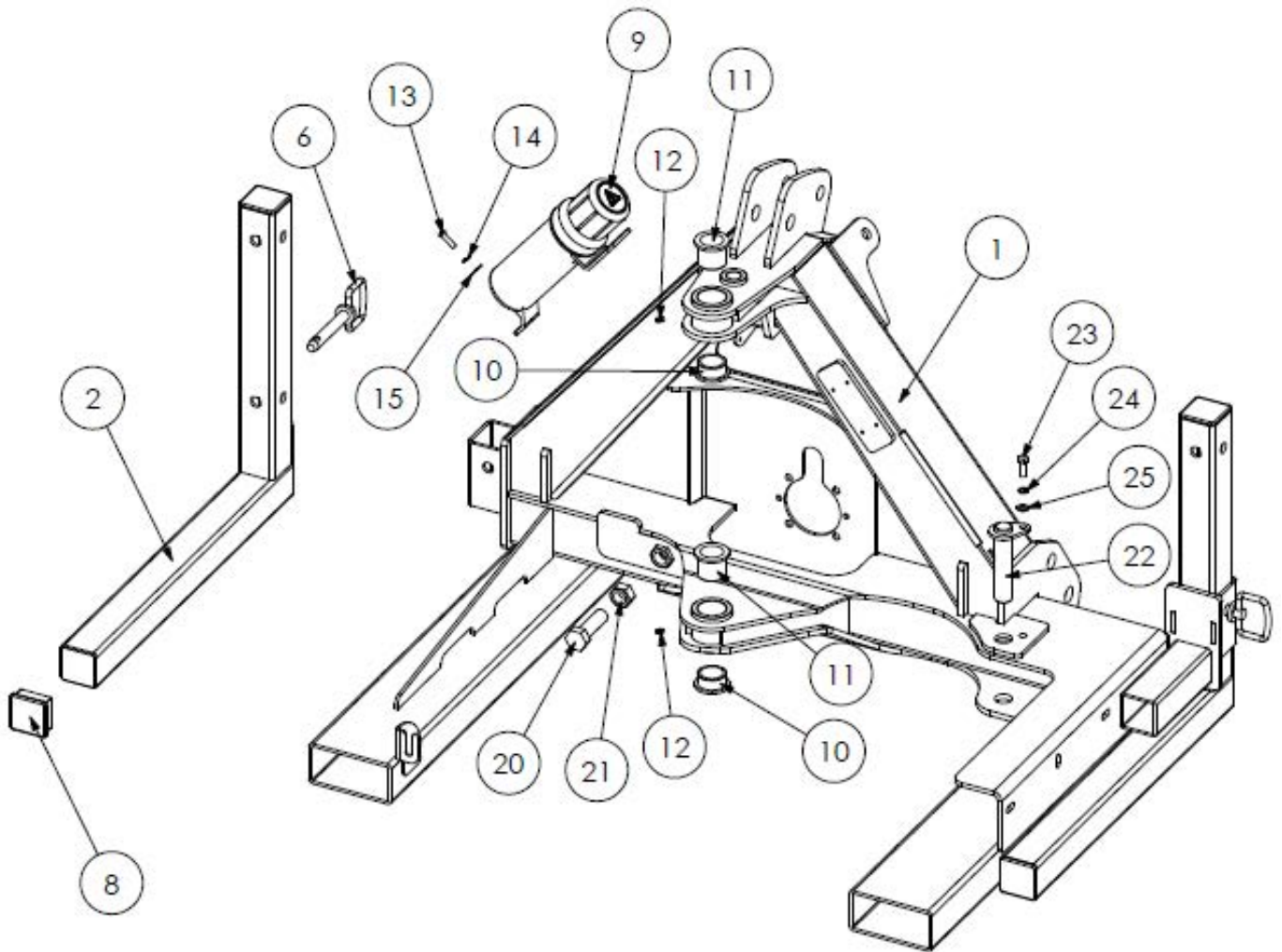
The information contained in this manual is correct at the time of publication. However, in the course of constant development, changes in specification are inevitable. Should you find the information given in this book different to the machine it relates to, please contact the "After Sales Department" for advice.

Key:

(LH)	=	Left hand
(RH)	=	Right hand
(LP)	=	Low pressure hydraulics
(HP)	=	High pressure hydraulics

Spearhead TWIGA

LH A FRAME - SI80032.00
RH A FRAME - SI80032.39



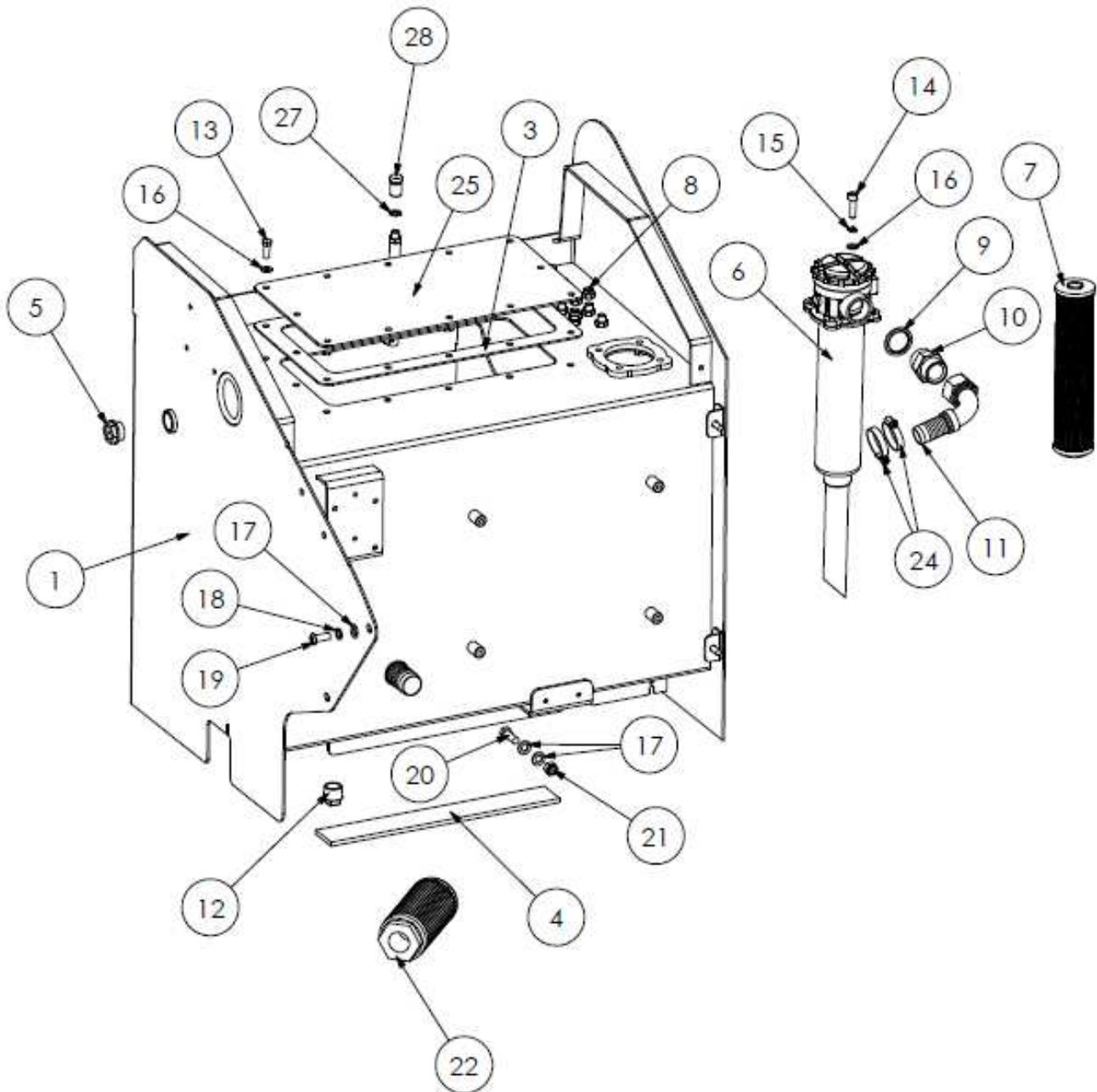
Spearhead TWIGA

LH MAIN FRAME - SI80032.00
RH MAIN FRAME - SI80032.39

REF NO.	PART NO.	QTY.	DESCRIPTION
1	1800100	1	LH MAIN FRAME
1	1800120	1	RH MAIN FRAME
2	180720	2	LEG STAND
3	1777556	1	PEAR PIN: 30 X 130 mm
6	6310215	2	CAT 1 PIN
8	45210.01	4	PLASTIC CAP
9	46505.01	1	DOCUMENTS TUBE
10	4600126	2	BUSH
11	4600127-A	2	BUSH
12	2770467	2	M6 ST GREASE NIPPLE
13	2770589	2	M8 X 20 SKT BUTTON SCREW
14	2770323	2	M8 SPRING WASHER
15	2770244	2	M8 REPAIR WASHER
20	2770551	1	M24 X 80 BOLT
21	2770460	1	M24 FULL NUT
22	1782100	1	PEAR PIN: 30 X 132 mm
23	2770421	1	M10 X 30 BOLT
24	2770469	1	M10 SPRING WASHER
25	2770434	1	M10 FLAT WASHER

Spearhead TWIGA

LH TANK - SI80032.01
RH TANK - SI80032.40



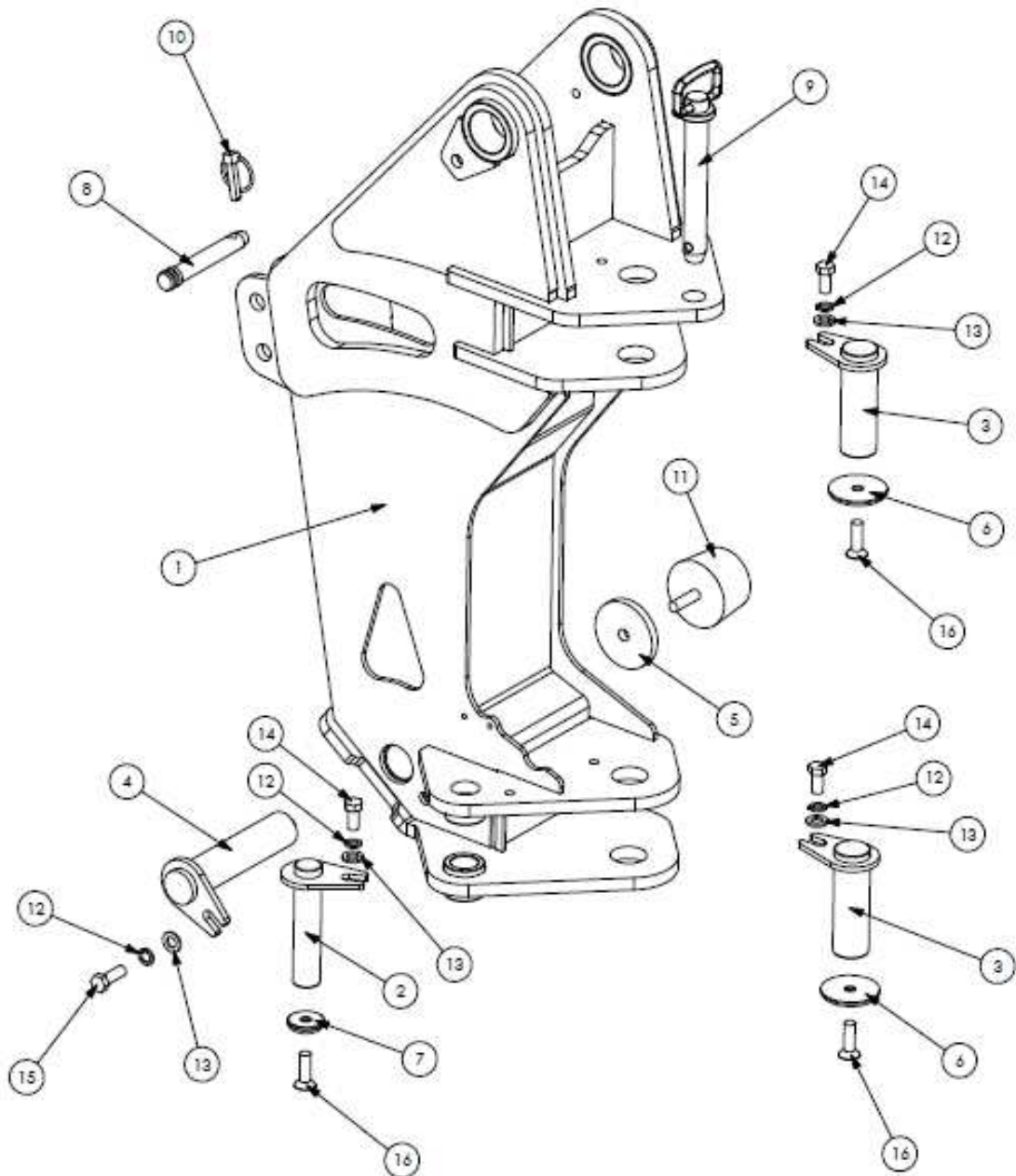
Spearhead TWIGA

LH TANK - S180032.01
RH TANK - S180032.40

REF NO.	PART NO.	QTY.	DESCRIPTION
1	180450	1	LH TANK
1	180442	1	RH TANK
3	5771637	1	GASKET
4	8400213	1	TANK MOUNT FLAP
5	3900063	1	LEVEL GAUGE
6	3900045	1	FILTER
7	3900079	-	FILTER ELEMENT
8	3460104	2	1/4" FM CAP
9	3260075	1	1 1/4" BONDED SEAL
10	3360095	1	1 1/4" M-M
11	3761004	1	1 1/4" 90 HOSE TAIL
12	T1698	2	TANK BUNG
13	2770418	10	M10 X 20 BOLT
14	30.072.27	4	M10 X 35 SKT CAP
15	2770469	4	M10 SPRING WASHER
16	2770434	14	M10 FLAT WASHER
17	2770436	6	M12 FLAT WASHER
18	2770442	2	M12 SPRING WASHER
19	05.625.10	2	M12 X 30 SKT CSK SCREW
20	2770535	2	M12 X 35 BOLT
21	2770417	2	M12 NYLOCK
22	8401047	1	SUCTION FILTER
23	8770417	1	LH DECAL
23	8770421	1	RH DECAL
24	3700188	2	JUBILEE CLIP
25	180191	1	TANK COVER PLATE
26	3260070	1	1/4" BONDED SEAL
27	154.021	1	BREATHING

Spearhead TWIGA

LH SLEW POST – SI80032.02
RH SLEW POST – SI80032.41



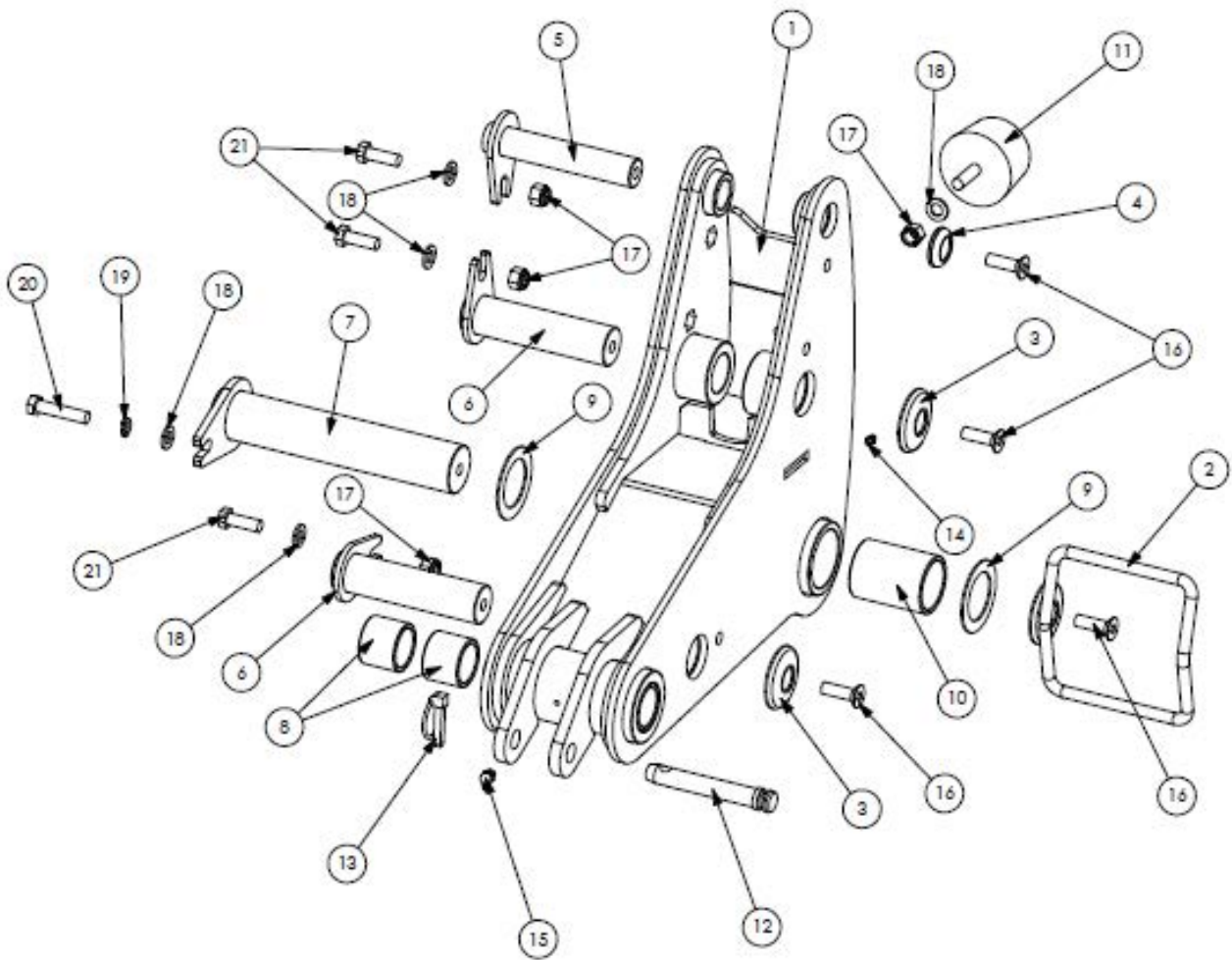
Spearhead TWIGA

LH SLEW POST – SI80032.02
RH SLEW POST – SI80032.4I

REF NO.	PART NO.	QTY.	DESCRIPTION
1	1800320	1	LH SLEW POST
1	1800322	1	RH SLEW POST
2	1777556	1	PEAR PIN: 30 X 130 mm
3	1782071	2	PEAR PIN: 40 X 113 mm
4	1777977	1	PEAR PIN: 40 X 170 mm
5	1777029	1	SPACER
6	1777208	2	RETAINING WASHER - 65mm
7	1777209	1	RETAINING WASHER - 40mm
8	6310202	1	TRANSPORT PIN
9	6310239	1	SLEW LOCK PIN
10	00.372.01	1	LYNCH PIN
11	8770634	1	RUBBER CUSHION
12	2770442	4	M12 SPRING WASHER
13	2770436	4	M12 FLAT WASHER
14	2770484	3	M12 X 25 BOLT
15	2770535	1	M12 X 30 BOLT
16	2770398	3	M12 X 40 SKT CSK SCREW

Spearhead TWIGA

LIFT FRAME - S180032.03



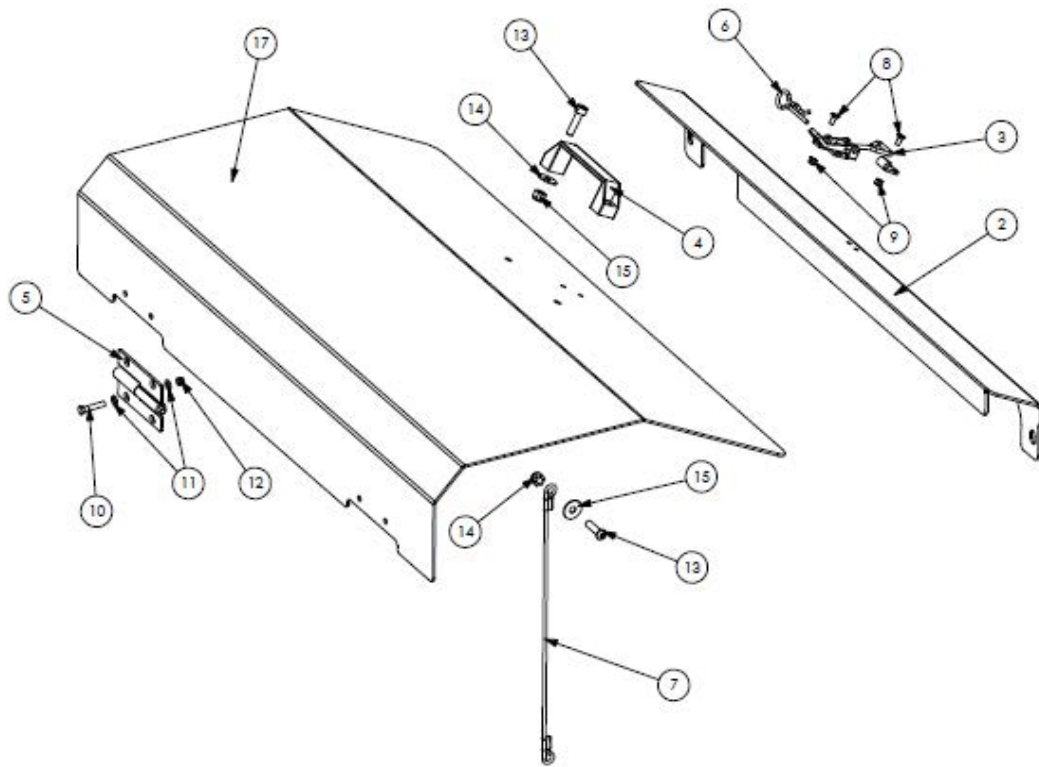
Spearhead TWIGA

LIFT FRAME – SI80032.03

REF NO.	PART NO.	QTY.	DESCRIPTION
1	1800321	1	LIFT FRAME
2	1770693	1	HOSE GUIDE BRACKET
3	1777208	2	RETAINING WASHER - 65mm
4	1777209	1	RETAINING WASHER - 40mm
5	1777467	1	PEAR PIN: 30 X 146mm
6	1782070	2	PEAR PIN: 40 X 147mm
7	1782072	1	PEAR PIN: 50 X 250mm
8	4600125	4	BUSH
9	4600137	2	SPACER
10	4600143	2	BUSH
11	8770634	1	RUBBER CUSHION
12	6310202	1	TRANSPORT PIN
13	00.372.01	1	LYNCH PIN
14	2770467	1	M6 ST GREASE NIPPLE
15	2770497	1	M6 90 GREASE NIPPLE
16	2770398	4	M12 X 40 SKT CAP SCREW
17	2770417	4	M12 NYLOCK
18	2770436	5	M12 FLAT
19	2770442	1	M12 SPRING WASHER
20	2770450	1	M12 X 55 BOLT
21	2770535	3	M12 X 35 BOLT

Spearhead TWIGA

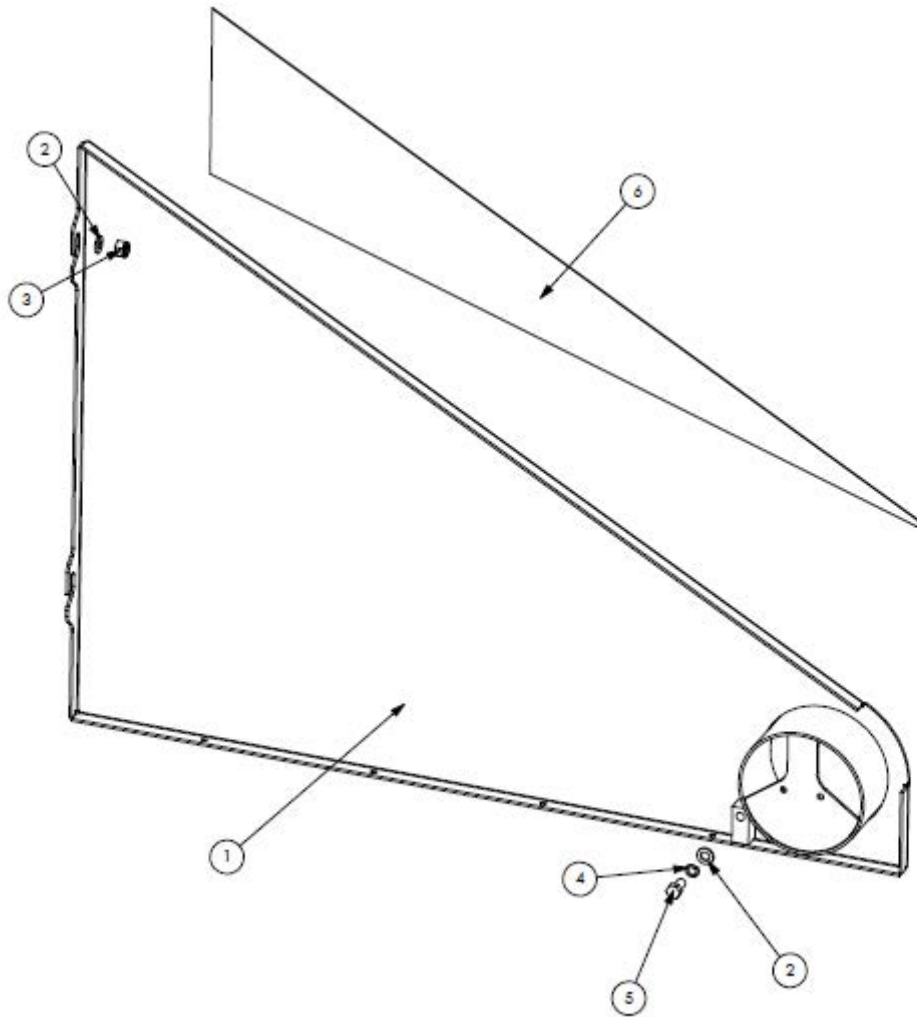
TANK LID – SI80032.04



REF NO.	PART NO.	QTY.	DESCRIPTION
2	180043	1	SLAM PANEL
3	8550142	1	LATCH & CLASP
4	8777513	1	HANDLE
5	46065.01	1	HINGE
5	46065.02	1	HINGE
6	6310194	1	R CLIP
7	6770939	1	WIRE ROPE
8	9353022	4	M5 X 12 SKT CSK BOLT
9	2770394	4	M5 NYLOCK
10	30.068.83	8	M6 X 20 BOLT
11	2771408	16	M6 FLAT WASHER
12	2770373	8	M6 NYLOCK
13	2770368	3	M8 X 30 SKT CAP
14	2770244	3	M8 REPAIR WASHER
15	2770416	3	M8 NYLOCK
16	03.231.01	2000	EDGING STRIP
17	180190	1	TANK LID

Spearhead TWIGA

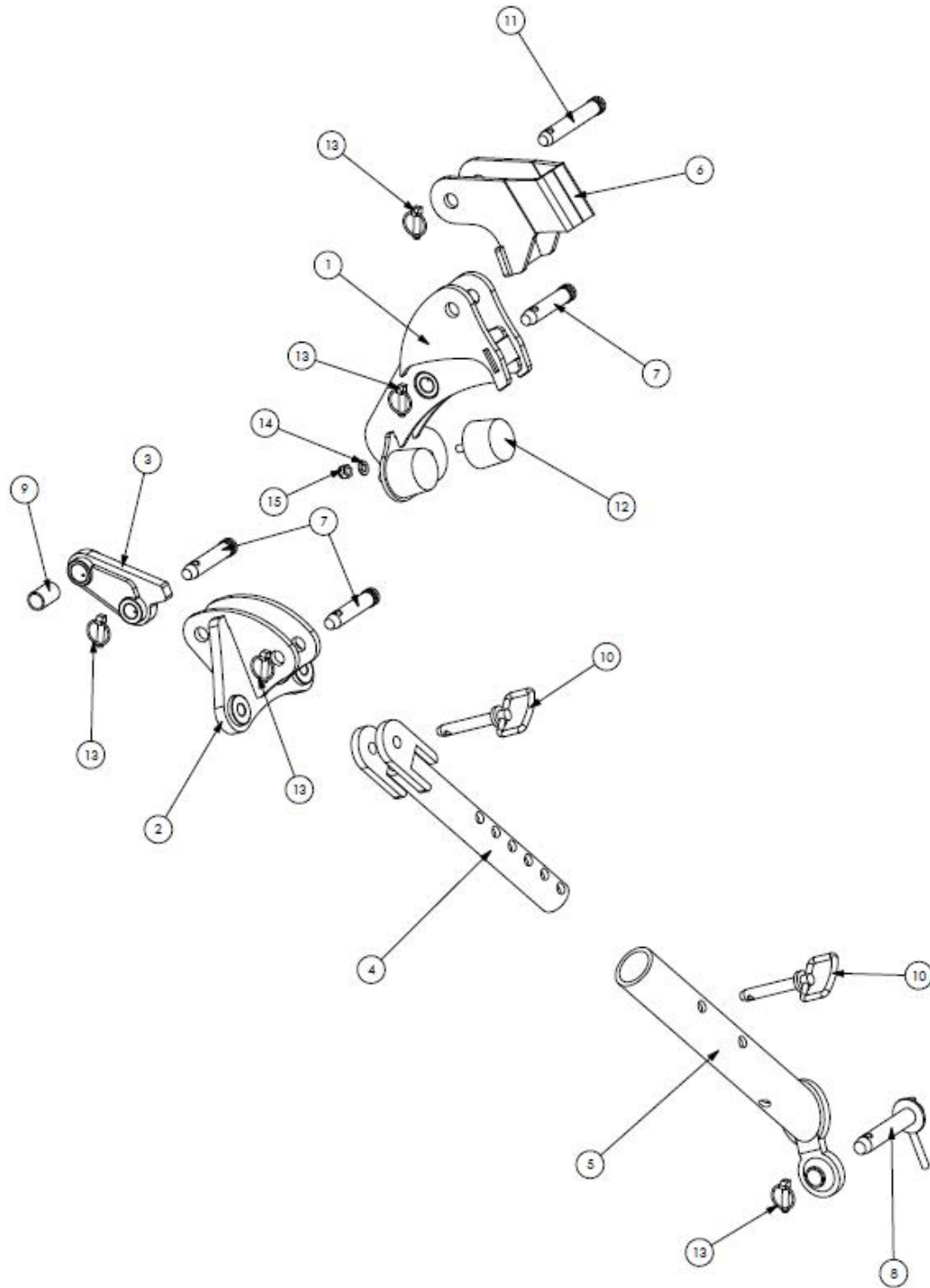
LH REAR PANEL – SI80032.05
RH REAR PANEL – SI80032.42



REF NO.	PART NO.	QTY.	DESCRIPTION
1	180451	1	LH REAR PANEL
1	180443	1	RH REAR PANEL
2	2770434	4	M10 FLAT WASHER
3	2770412	3	M10 NYLOCK
4	2770469	1	M10 SPRING WASHER
5	2770418	1	M10 X 20 BOLT
6	8770418	1	LH DECAL
6	8770422	1	RH DECAL

Spearhead TWIGA

STABILISER BRACKETS – SI80032.06



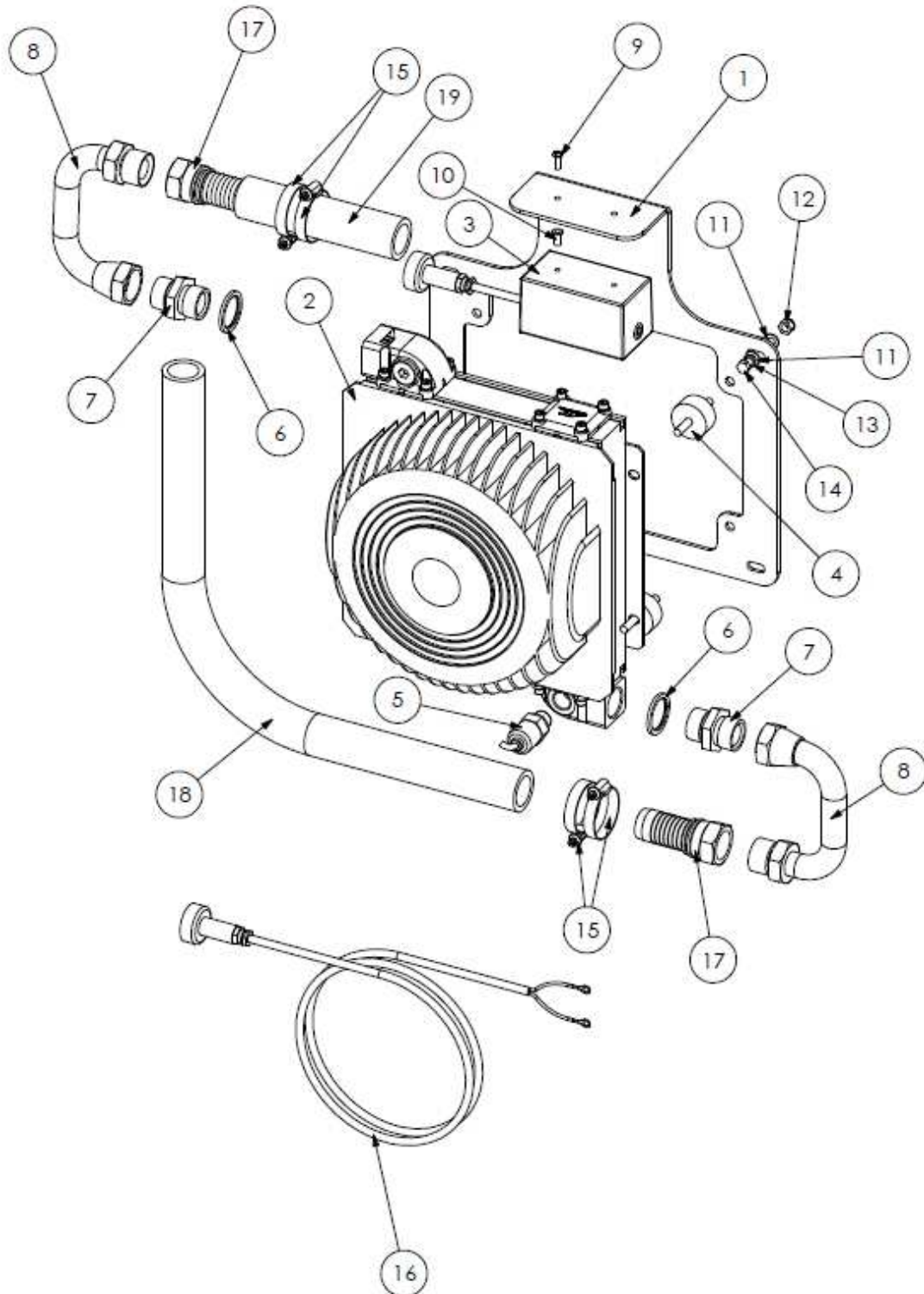
Spearhead TWIGA

STABILISER BRACKETS – S180032.06

REF NO.	PART NO.	QTY.	DESCRIPTION
1	1800331	1	TOP LINK CUSHION BRACKET
2	1800289	1	STABILISER BRACKET
3	1800290	1	STABILISER TONGUE
4	1777532	2	INNER STABILISER
5	1777533A	2	OUTER STABILISER
6	1777887	1	OVER CENTRE BRACKET
7	6310203	3	TOP LINK PIN
8	6310208	4	LOWER LINK PIN
9	6310214	1	CONVERSION BUSH
10	6310215	4	PIN
11	6310235	1	TOP LINK PIN
12	8770634	2	RUBBER CUSHION
13	00.372.01	8	LYNCH PIN
14	2770436	2	M12 FLAT WASHER
15	2770417	2	M12 NYLOCK

Spearhead TWIGA

OIL COOLER – SI80032.07



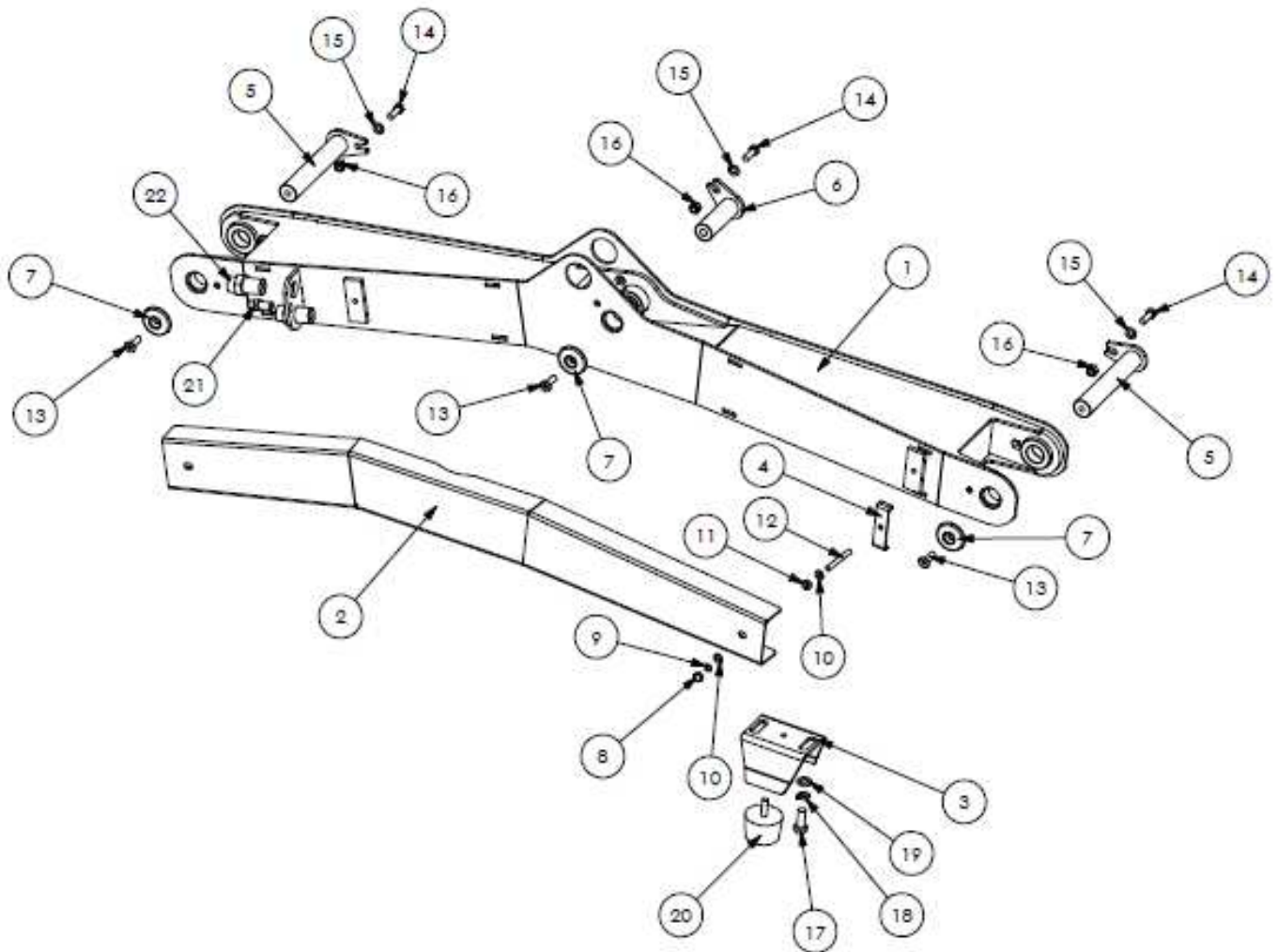
Spearhead TWIGA

OIL COOLER – SI80032.07

REF NO.	PART NO.	QTY.	DESCRIPTION
1	180042	1	OIL COOLER MOUNT PLATE
2	3151068	1	OIL COOLER
3	8770711	1	CONTROL BOX
4	8770603	4	RUBBER MOUNT
5	47313.03	1	THERMOSTAT
6	3260074	2	1" BONDED SEAL
7	3360092	2	1" M-M
8	46127.02	2	1" 180° U BEND
9	2770580	2	M5 X 15 SCREW
10	2770207	2	M5 RIVNUT
11	2770432	12	M8 FLAT WASHER
12	2770416	8	M8 NYLOCK
13	2770433	4	M8 SPRING WASHER
14	2770402	4	M8 X 20 BOLT
15	3700188	4	JUBILEE CLIP
16	8770713	1	POWER LEAD
17	3761014	2	1" FM X 1¼" M HOSE TAIL
18	3760124	1	INLET HOSE: 680mm
19	3760117	1	OUTLET HOSE: 255mm

Spearhead TWIGA

555 LH MAIN ARM – SI80032.08
555 RH MAIN ARM – SI80032.43
600/655T LH MAIN ARM – SI80032.11
600/655T RH MAIN ARM – SI80032.48



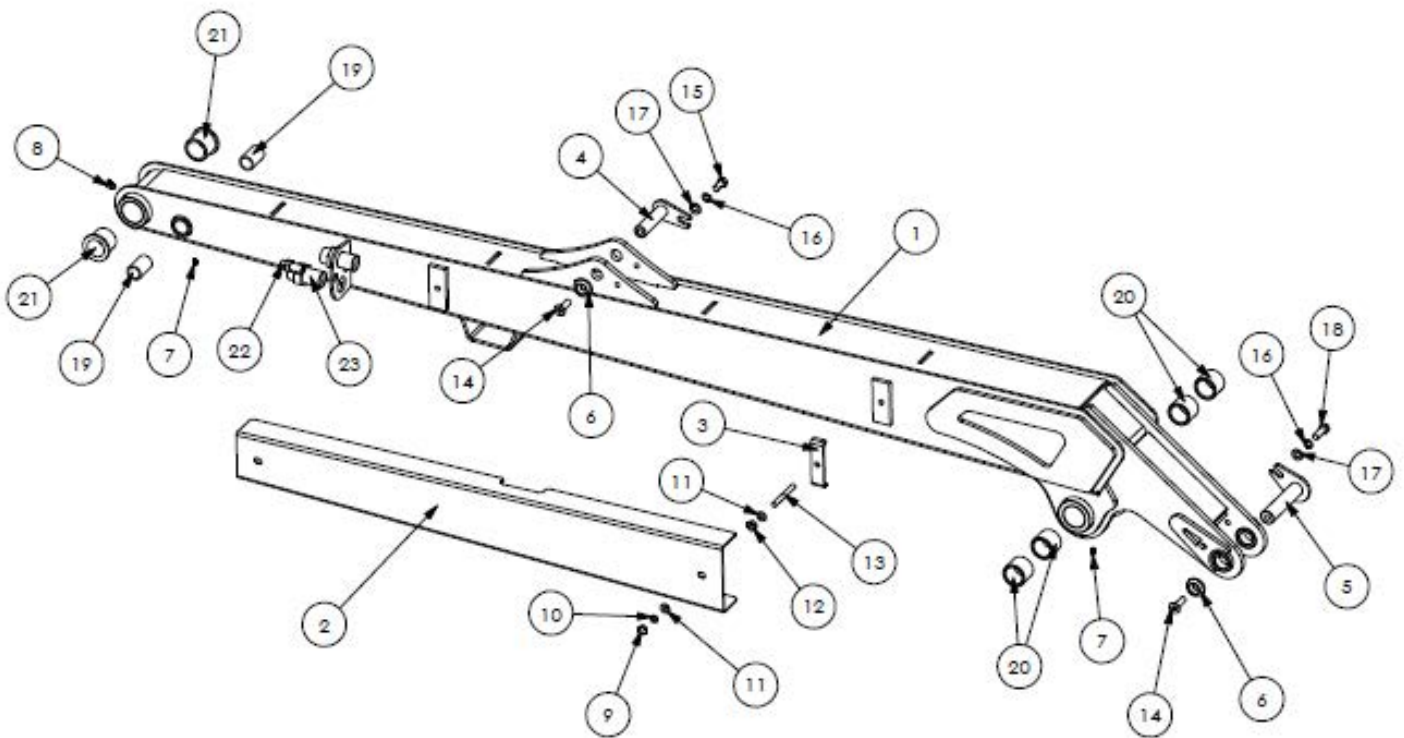
Spearhead TWIGA

555 LH MAIN ARM – SI80032.08
555 RH MAIN ARM – SI80032.43
600/655T LH MAIN ARM – SI80032.II
600/655T RH MAIN ARM – SI80032.48

REF NO.	PART NO.	QTY.	DESCRIPTION
1	1800114	1	LH MAIN ARM - 555
1	1800132	1	RH MAIN ARM - 555
1	1800112	1	LH MAIN ARM - 600/655T
1	1800130	1	RH MAIN ARM - 600/655T
2	180051	1	LH MAIN ARM GUARD - 555
2	180052	1	RH MAIN ARM GUARD - 555
2	180053	1	LH MAIN ARM GUARD - 600/655T
2	180054	1	RH MAIN ARM GUARD - 600/655T
3	1777144	1	BUMP STOP PLATE
4	1777954	2	HOSE CLAMP PLATE
5	1777910A	2	PEAR PIN: 40 X 231 mm
6	1777976	1	PEAR PIN: 40 X 120 mm
7	1777208	3	RETAINING WASHER - 60mm
8	9100025	2	M10 DOMED NUT
9	05.283.02	2	M10 SHAKE PROOF WASHER
10	2770434	4	M10 FLAT WASHER
11	05.286.02	2	M10 FULL NUT
12	04.282.09	2	M10 X 85 STUD
13	2770205	1	M12 RIVNUT
14	2770398	3	M12 X 40 SKT CSK SCREW
15	2770535	3	M12 X 35 BOLT
16	2770436	3	M12 FLAT WASHER
17	2770417	3	M12 NYLOCK
18	05.264.35	2	M16 X 40 BOLT
19	2770456	2	M16 SPRING WASHER
20	2770454	2	M16 FLAT WASHER
21	8770634	1	RUBBER CUSHION
22	3700228	1	3/8" BULKHEAD
23	3460115	2	1" BULKHEAD

Spearhead TWIGA

555 LH DIPPER ARM - SI80032.09
555 RH DIPPER ARM - SI80032.44
600 LH DIPPER ARM - SI80032.12
600 RH DIPPER ARM - SI80032.49



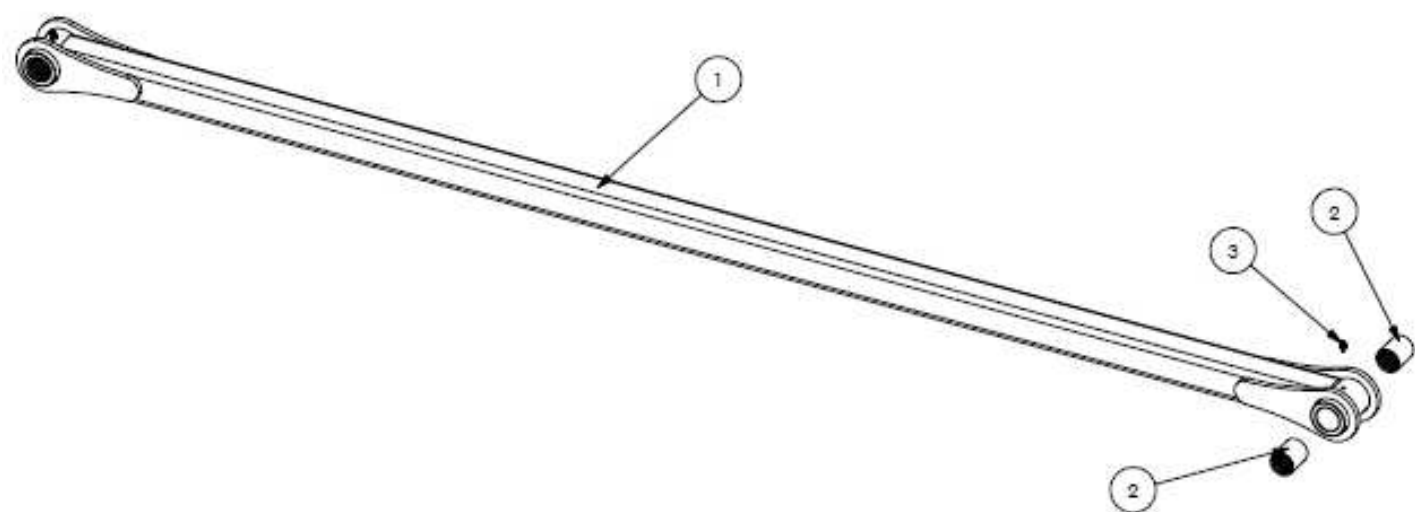
Spearhead TWIGA

555 LH DIPPER ARM – SI80032.09
555 RH DIPPER ARM – SI80032.44
600 LH DIPPER ARM – SI80032.09
600 RH DIPPER ARM – SI80032.49

REF NO.	PART NO.	QTY.	DESCRIPTION
1	1800111	1	LH DIPPER ARM - 555
1	1800129	1	RH DIPPER ARM - 555
1	1800113	1	LH DIPPER ARM - 600
1	1800131	1	RH DIPPER ARM - 600
2	1800139	1	DIPPER ARM GUARD - 555
2	1800140	1	DIPPER ARM GUARD - 600
3	1777954	2	HOSE CLAMP PLATE
4	1778038	1	PEAR PIN: 25.4 X 98 mm
5	1777556	1	PEAR PIN: 30 X 130 mm
6	1777209	2	RETAINING WASHER - 40mm
7	2770467	2	M6 ST GREASE NIPPLE
8	2770497	1	M6 90 GREASE NIPPLE
9	9100025	2	M10 DOMED NUT
10	2770469	2	M10 SPRING WASHER
11	2770434	4	M10 FLAT WASHER
12	05.286.02	2	M10 FULL NUT
13	04.282.09	2	M10 X 85 STUD
14	2770398	2	M12 X 40 SKT CSK SCREW
15	2770484	1	M12 X 25 BOLT
16	2770442	2	M12 SPRING WASHER
17	2770436	2	M12 FLAT WASHER
18	2770535	1	M12 X 35 BOLT
19	4600124	2	BUSH
20	4600125	4	BUSH
21	4600127-A	2	BUSH
22	3700228	1	3/8" BULKHEAD
23	3460115	2	1" BULKHEAD

Spearhead TWIGA

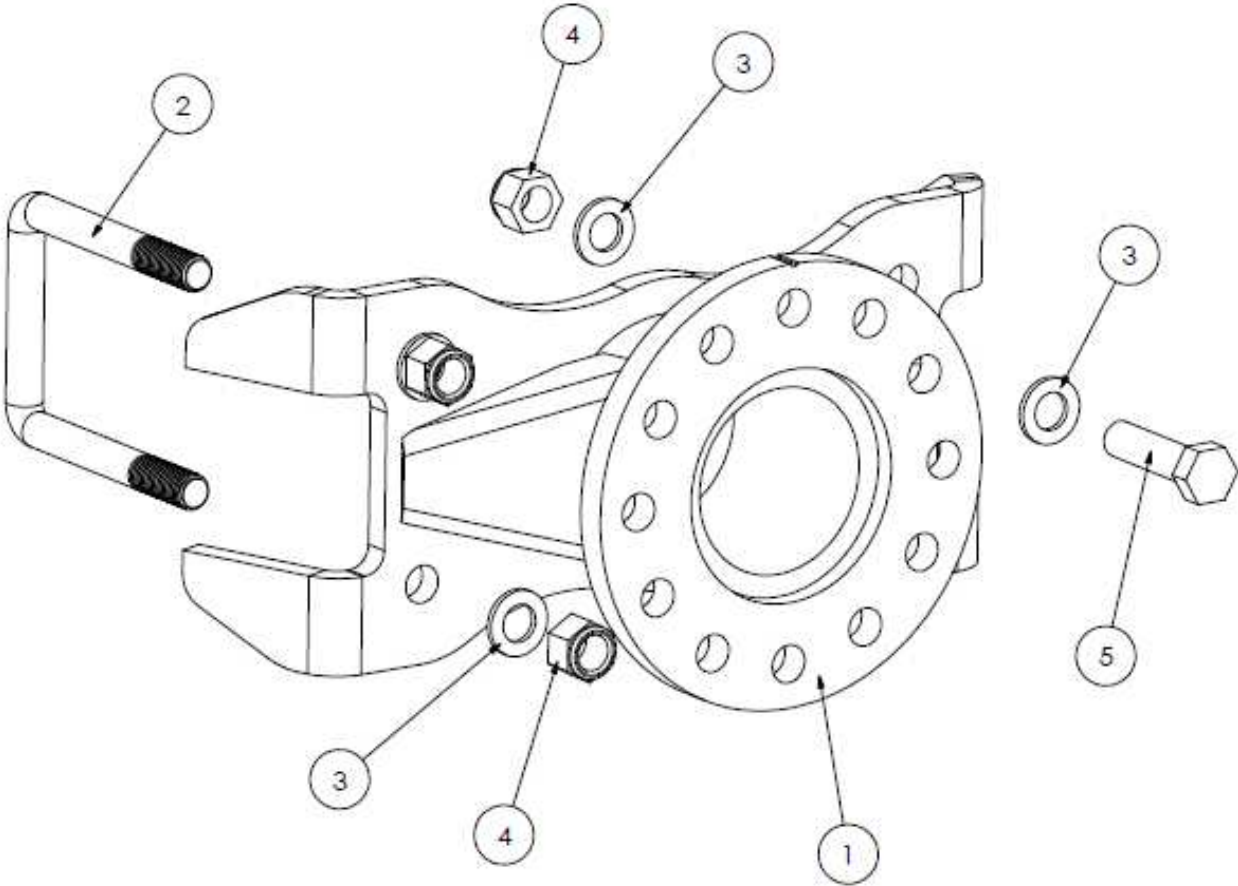
555 TIE BAR – SI80032.10
600/655T TIE BAR – SI80032.23



REF NO.	PART NO.	QTY.	DESCRIPTION
1	1800144	1	TIE BAR 555
1	1800333	1	TIE BAR 600/655T
2	42654.08	4	BUSH: 30X40
3	2770467	2	M6 ST GREASE NIPPLE

Spearhead TWIGA

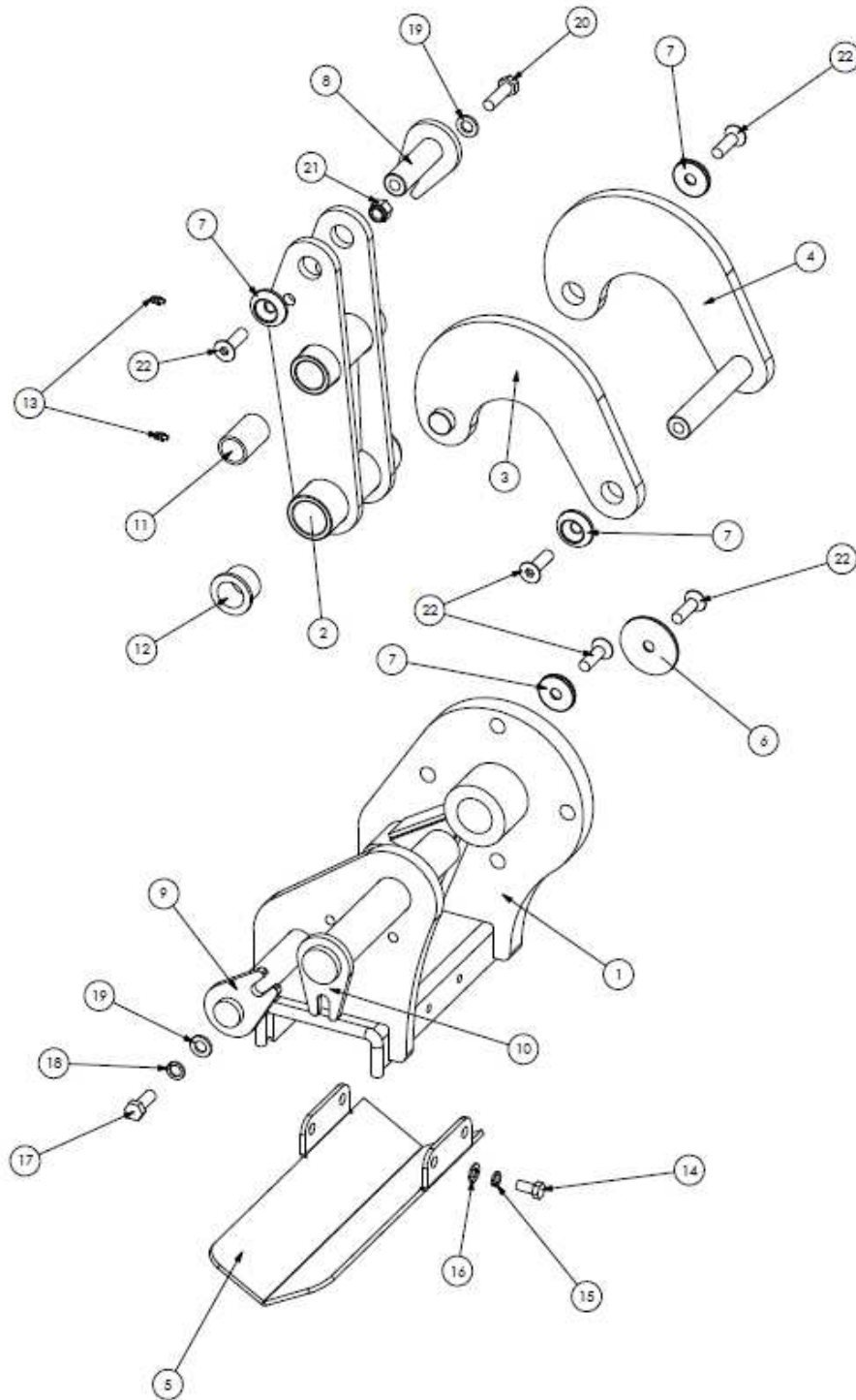
HEAD MOUNT BRACKET – SI80028.II



REF NO.	PART NO.	QTY.	DESCRIPTION
1	180233	1	HEAD MOUNT BRACKET
2	2770625	2	M16 U BOLT
3	2770454	12	M16 FLAT WASHER
4	2770447	8	M16 NYLOCK
5	2770423	4	M16 X 60 BOLT

Spearhead TWIGA

LH HEAD CROWD BRACKET – SI80032.13
RH HEAD CROWD BRACKET – SI80032.45



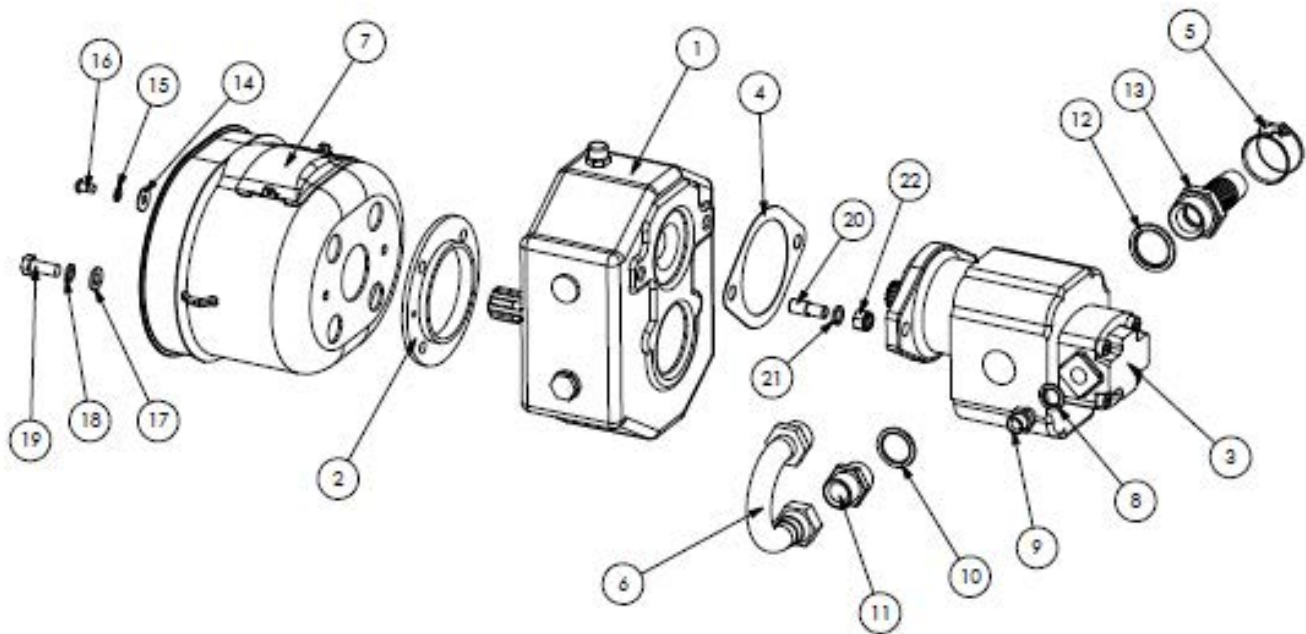
Spearhead TWIGA

LH HEAD CROWD BRACKET – SI80032.I3
RH HEAD CROWD BRACKET – SI80032.45

REF NO.	PART NO.	QTY.	DESCRIPTION
1	1777316E	1	LH BRACKET
1	1777316ER	1	RH BRACKET
2	1777116A	1	CROWD LINK
3	1800141	1	INNER CURVED LINK
4	1800142	1	OUTER CURVED LINK
5	1777879	1	HOSE CARRIER PLATE
6	1777208	1	RETAINING WASHER - 65mm
7	1777209	4	RETAINING WASHER - 40mm
8	1777918A	1	PEAR PIN: 25.4 X 80 mm
9	1777914A	1	PEAR PIN: 30 X 80 mm
10	1777911A	1	PEAR PIN: 40 X 80 mm
11	4600124	2	BUSH
12	4600135B	2	BUSH
13	2770467	2	M6 ST GREASE NIPPLE
14	2770418	4	M10 X 20 BOLT
15	2770469	4	M10 SPRING WASHER
16	2770434	4	M10 FLAT WASHER
17	2770420	2	M12 X 30 BOLT
18	2770442	2	M12 SPRING WASHER
19	2770436	3	M12 FLAT WASHER
20	2770443	1	M12 X 40 BOLT
21	2770417	1	M12 NYLOCK
22	2770398	5	M12 X 40 SKT CSK SCREW

Spearhead TWIGA

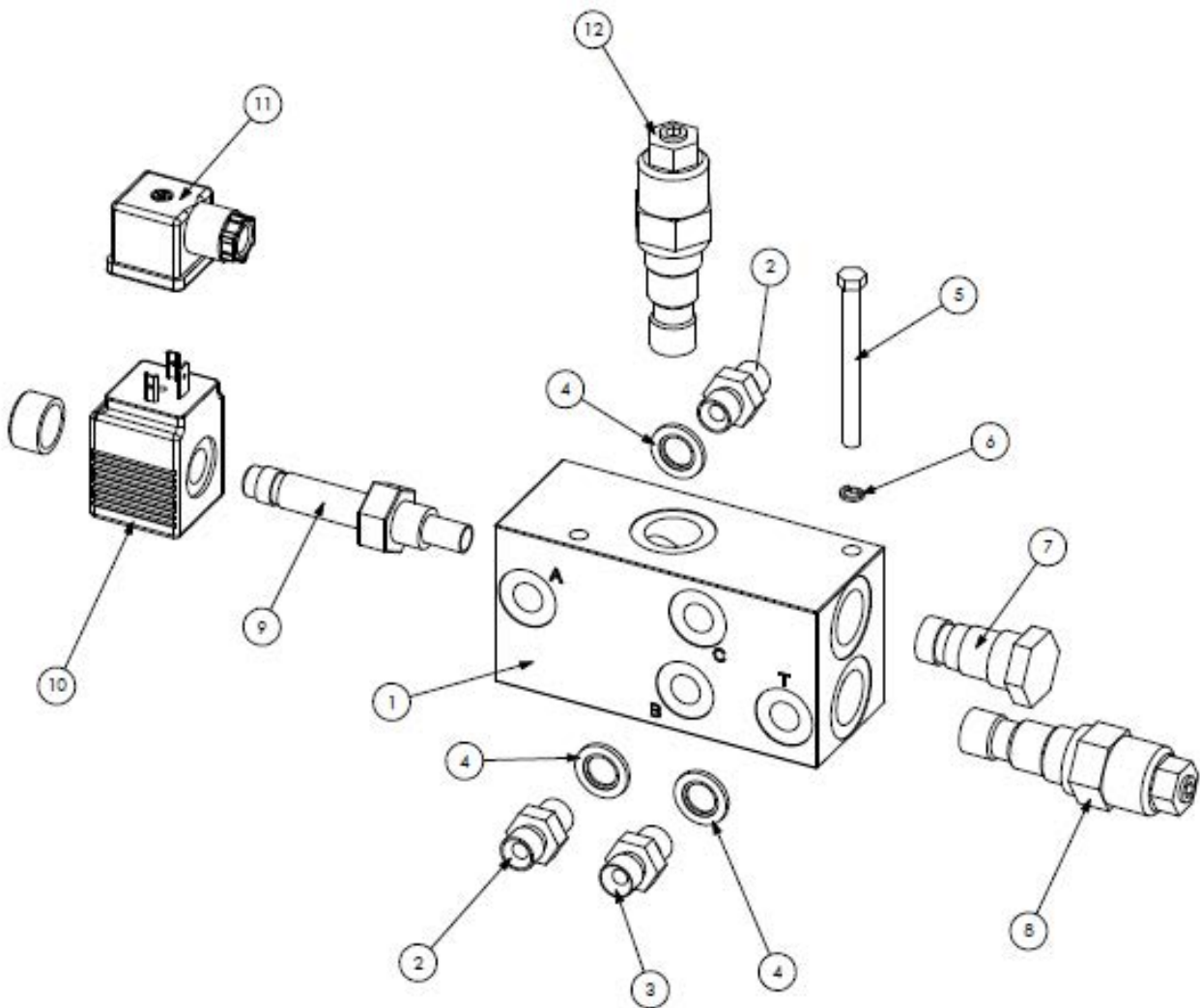
HYDRAULIC DRIVE – S180028.I3



REF NO.	PART NO.	QTY.	DESCRIPTION
1	3151080	1	GEARBOX
2	1778200	1	GEARBOX SUPPORT RING
3	3151096	1	TANDEM PUMP
3	3151045	-	16cc SERVICE PUMP
4	3151032G	1	GASKET
5	47603.01	2	CLAMP
6	46043.01	1	U BEND
7	5770116	1	CONE
8	3260072	1	½" BONDED SEAL
9	3360088	1	3/8" X ½" M-M
10	3260074	2	1" BONDED SEAL
11	3360092	1	1" M-M ADAPTOR
12	3700226	1	1 ½" BONDED SEAL
13	3761006	1	1 ½" MALE INSERT
14	2770244	2	M8 REPAIR WASHER
15	2770433	2	M8 SPRING WASHER
16	2770370	2	M8 X 16 SKT BUTTON
17	2770436	4	M12 FLAT WASHER
18	2770442	4	M12 SPRING WASHER
19	2770420	4	M12 X 30 BOLT
20	47591.02	2	M12 X 14 STUD
21	05.283.03	2	M12 SHAKE PROOF
22	05.287.03	2	M12 V LOCK
23	5770084C	1	P.T.O.

Spearhead TWIGA

BREAK BACK VALVE – S I80028.4I

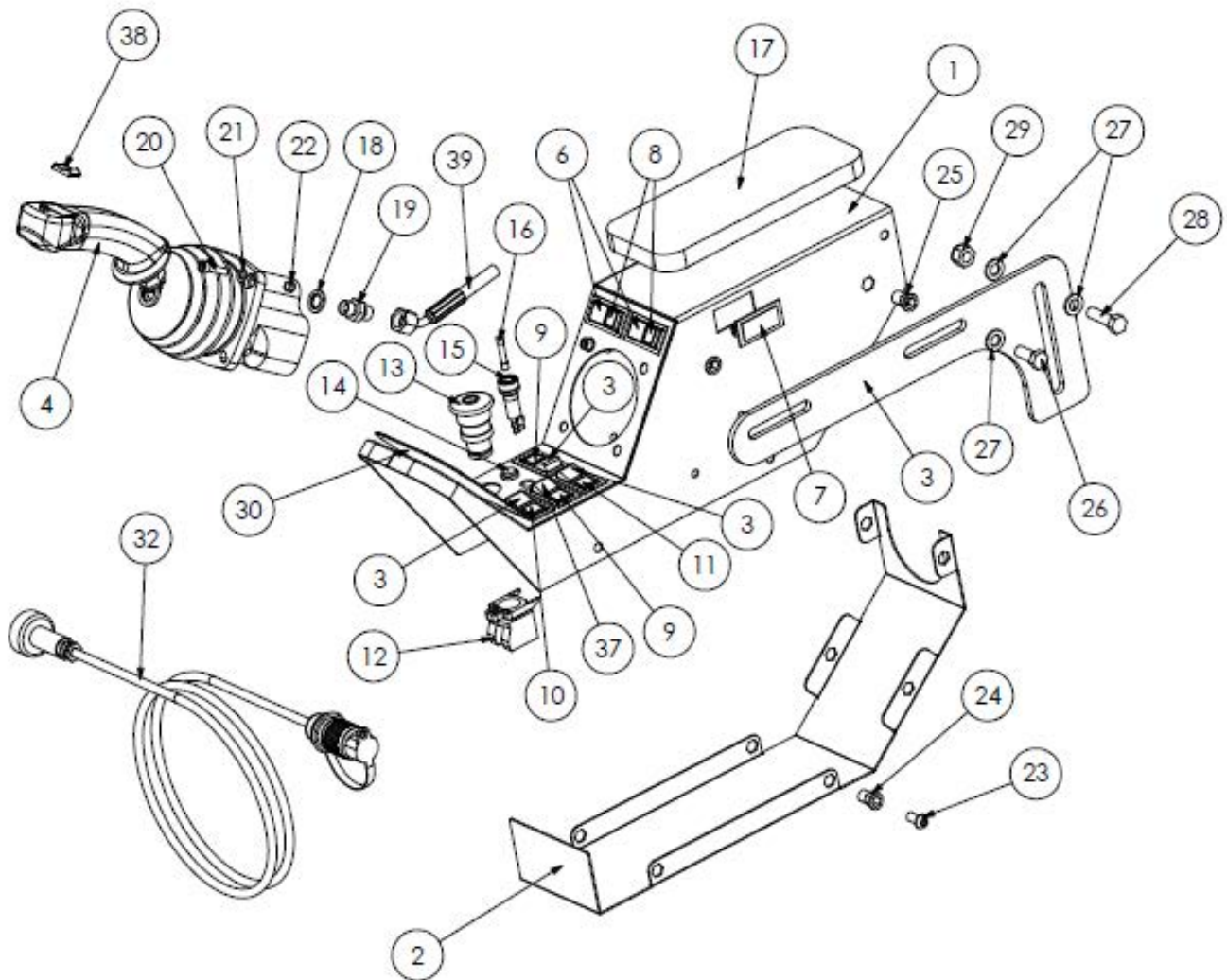


REF NO.	PART NO.	QTY.	DESCRIPTION
1	3610057	1	VALVE ASSEMBLY
2	3360080	6	¼" M-M
3	3360097	1	¼" M-M R1
4	3260070	7	¼" BONDED SEAL
5	30.068.93	2	M6 X 70 BOLT
6	05.282.07	2	M6 SPRING WASHER
7	3610054	-	P.O.C. CARTRIDGE
8	3600144	-	RELIEF VALVE CARTRIDGE
9	3610032A	-	SOLENOID CARTRIDGE
10	3610030A	-	COIL
11	3610048	-	DIN CONNECTOR
12	3600137	-	SEQUENCE CARTRIDGE

Spearhead TWIGA

LH HYDRAULIC PROPORTIONAL CONTROLS – S 180032.15

RH HYDRAULIC PROPORTIONAL CONTROLS – S 180032.47



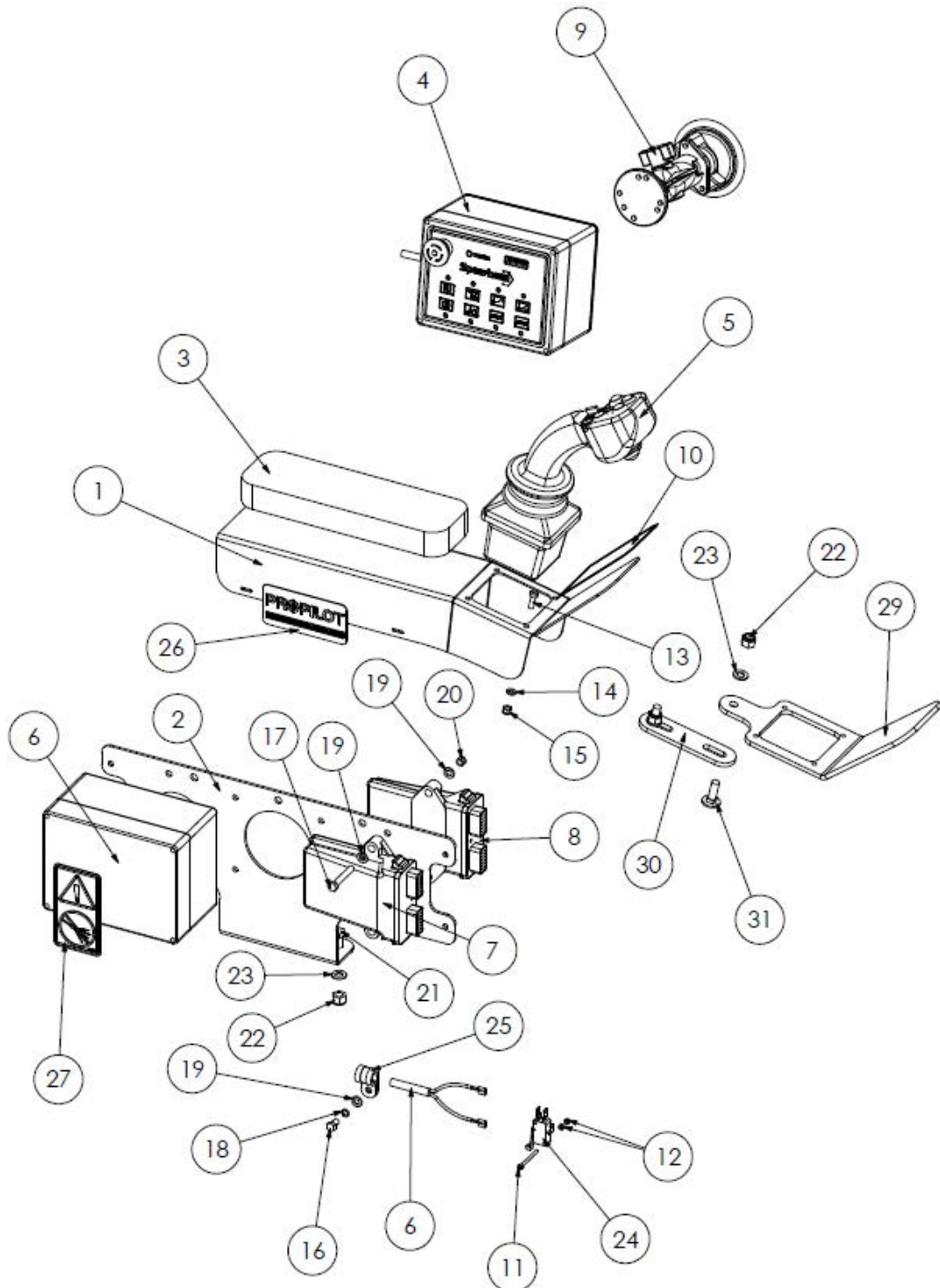
Spearhead TWIGA

LH HYDRAULIC PROPORTIONAL CONTROLS – S 180032.15 RH HYDRAULIC PROPORTIONAL CONTROLS – S 180032.47

REF NO.	PART NO.	QTY.	DESCRIPTION
1	1777028A	1	ARMREST
2	1777033	1	ARMREST COVER
3	180440	1	ARMREST BRACKET
4	3910228A	1	JOYSTICK
5	3910276	3	SWITCH - ON/OFF
6	8400160	2	SWITCH - ON/OFF/ON
7	8400162	1	SWITCH BLANK
8	8400163B	2	SWITCH INSERT - BLANK
9	8400163G	2	SWITCH INSERT - GREEN
10	8400163R	1	SWITCH INSERT - RED
11	8400163Y	1	SWITCH INSERT - YELLOW
12	8400166	1	ROTOR SWITCH
13	8400167	1	ROTOR KNOB
14	8400168	1	POWER LIGHT
15	8400183	1	FUSE HOLDER
16	8400184	1	FUSE
17	5771634	1	FOAM PAD
18	3260070	6	1/4" BONDED SEAL
19	3360080	6	1/4" M-M
20	2770336	4	M6 X 25 SKT CAP BOLT
21	2771408	4	M6 FLAT WASHER
22	2770373	4	M6 NYLOCK NUT
23	2770370	8	M8 X 15 SKT BUTTON BOLT
24	2770206	8	M8 RIVNUT
25	2770202	4	M10 RIVNUT
26	2770407	2	M10 X 25 BOLT
27	2770434	6	M10 FLAT WASHER
28	2770396	2	M10 X 35 BOLT
29	2770412	2	M10 NYLOCK
30	8770456	1	LH DECAL
30	8770457	-	RH DECAL
31	8770748	1	CONTROL LOOM
32	8770712	1	POWER LEAD
33	43542.21	1	LARGE HOSE SLEEVE
34	30.058.66	12	SMALL CABLE TIE
35	3760123	1	HOSE: 1/4 X 430 mm
35	3760122	-	HOSE: 1/4 X 330 mm
36	3760125	1	HOSE: 1/4 X 220 mm
36	3760126	-	HOSE: 1/4 X 500 mm
37	8400035	1	SWITCH - OFF/ON/ON
38	3910222	-	HEAD ANGLE SWITCH
39	3750561	-	HOSE KIT

Spearhead TWIGA

LH ELECTRIC PROPORTIONAL PRO PILOT CONTROLS – S180028.48
RH ELECTRIC PROPORTIONAL PRO PILOT CONTROLS – S180028.I16



Spearhead TWIGA

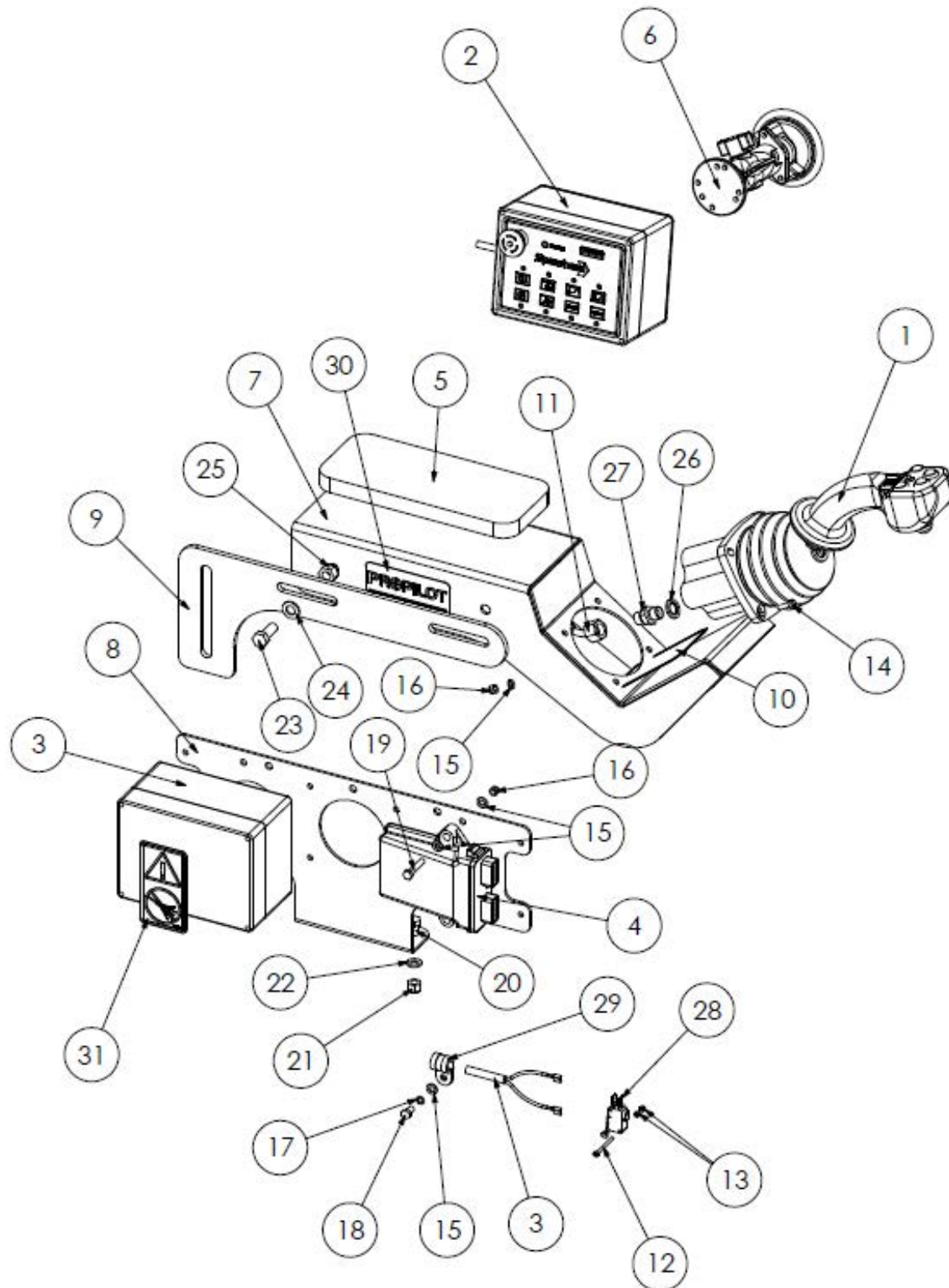
LH ELECTRIC PROPORTIONAL PRO PILOT CONTROLS – SI80028.48
RH ELECTRIC PROPORTIONAL PRO PILOT CONTROLS – SI80028.II6

REF NO.	PART NO.	QTY.	DESCRIPTION
1	180729	1	JOYSTICK ARM REST
2	180216	1	JUNCTION BOX BRACKET
3	22073.45	1	FOAM PAD
4	8770702	1	SWITCH BOX
5	8770737	1	ELEC PROP JOYSTICK
6	8770772	1	LOOM
7	8770746	1	CONTROL BOX 1
8	8770773	1	CONTROL BOX 2
9	22073.09	1	SUCTION PAD
10	8770435	1	LH DECAL
10	8770437	-	RH DECAL
11	9300108	2	M3 X 20 SCREW
12	2770233	4	M3 FULL NUT
13	9300133	4	M4 X 25 SCREW
14	30.074.95	4	M4 FLAT WASHER
15	05.948.33	4	M4 NYLOCK NUT
16	30.068.83	3	M6 X 20 BOLT
17	30.068.90	2	M6 X 55 BOLT
18	05.282.07	3	M6 SPRING WASHER
19	2771408	4	M6 FLAT WASHER
20	2770373	2	M6 NYLOCK NUT
21	2770402	2	M8 X 20 BOLT
22	2770416	2	M8 NYLOCK
23	2770432	2	M8 FLAT WASHER
24	3910275	1	SWITCH
25	3850103	3	P CLIP
26	8770453	2	PRO PILOT DECAL
27	8770454	1	DON'T WASH DECAL
28	30.058.66	10	CABLE TIE - SM
29	180228	-	JOYSTICK MOUNT BRACKET
30	180229	-	JOYSTICK MOUNT ARM
31	9293054	-	M8 X 25 COACH BOLT

Spearhead TWIGA

LH HYDRAULIC PROPORTIONAL PRO PILOT CONTROLS – SI80028.47

RH HYDRAULIC PROPORTIONAL PRO PILOT CONTROLS – SI80028.II7



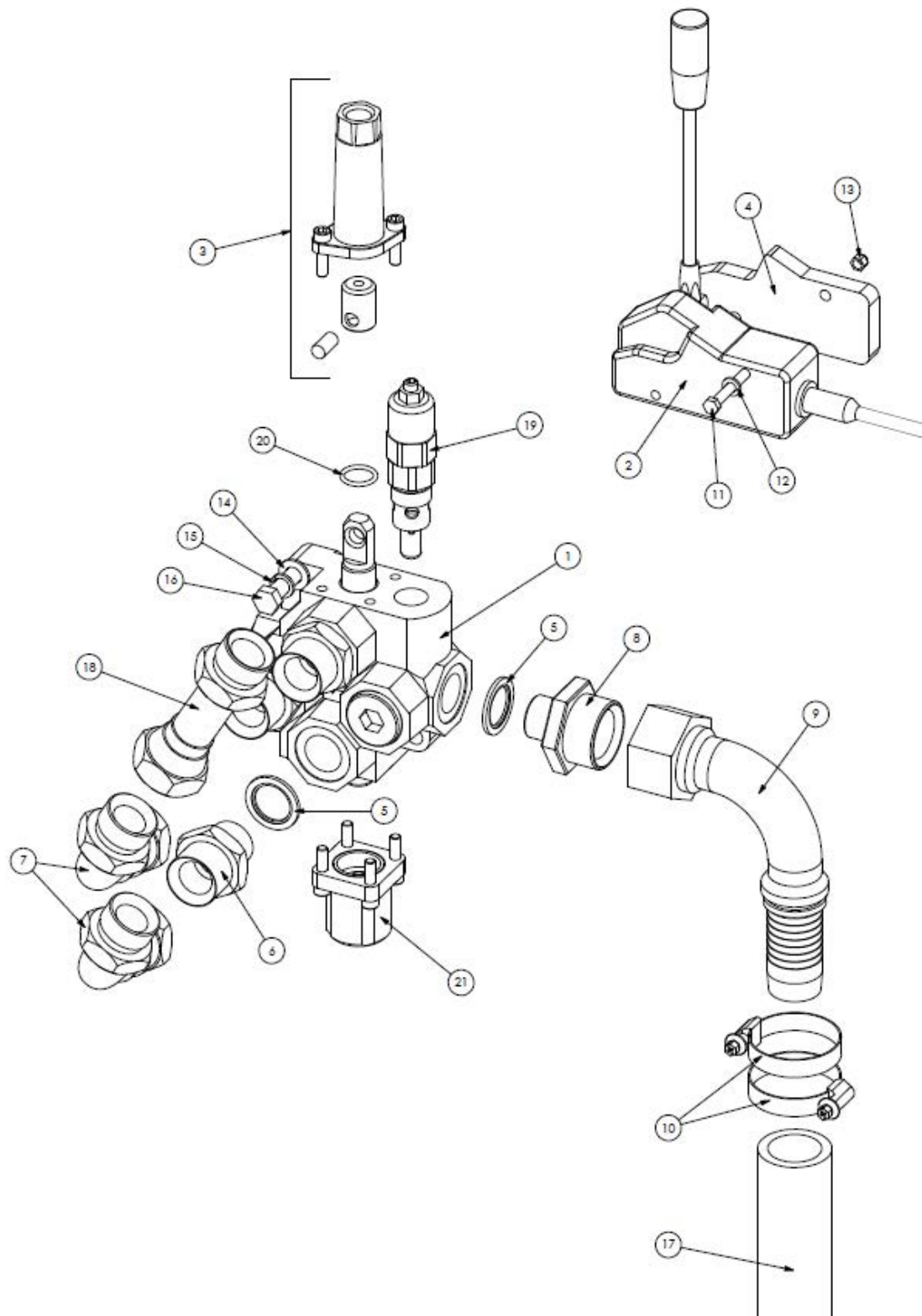
Spearhead TWIGA

LH HYDRAULIC PROPORTIONAL PRO PILOT CONTROLS – SI80028.47
RH HYDRAULIC PROPORTIONAL PRO PILOT CONTROLS – SI80028.II7

REF NO.	PART NO.	QTY.	DESCRIPTION
1	3910097	1	HYD PROP JOYSTICK
2	8770702	1	SWITCH BOX
3	8770772	1	LOOM
4	8770746	1	CONTROL BOX 1
5	5771634	1	FOAM PAD
6	22073.09	1	SUCTION PAD
7	180050	1	JOYSTICK ARM REST
8	180216	1	CONTROL BOX BRACKET
9	180440	1	ARM REST BRACKET
10	8770435	1	LH DECAL
10	8770437	1	RH DECAL
11	3750561	1	CONTROL HOSE KIT
12	9300108	2	M3 X 20 SCREW
13	2770233	4	M3 FULL NUT
14	2770336	4	M6 X 25 SKT CAP BOLT
15	2771408	11	M6 FLAT WASHER
16	2770373	6	M6 NYLOCK
17	05.282.07	3	M6 SPRING WASHER
18	30.068.83	3	M6 X 20 BOLT
19	2770486	2	M6 X 30 BOLT
20	2770402	2	M8 X 20 BOLT
21	2770416	2	M8 NYLOCK
22	2770432	2	M8 FLAT WASHER
23	2770407	2	M10 X 25 BOLT
24	2770434	2	M10 FLAT WASHER
25	2770412	2	M10 NYLOCK
26	3260070	6	1/4 BONDED SEAL
27	3360080	6	1/4 M-M
28	3910275	1	SWITCH
29	3850103	3	P CLIP
30	8770452	2	PRO PILOT DECAL
31	8770454	1	DON'T WASH DECAL
32	30.058.66	8	CABLE TIE - SM
33	43542.21	1	HOSE SLEEVE: 3100mm - LRG

Spearhead TWIGA

CABLE ROTOR VALVE – S 180032.16



Spearhead TWIGA

CABLE ROTOR VALVE – S I80032.I6

REF NO.	PART NO.	QTY.	DESCRIPTION
1	48033.02	1	SD14 VALVE
2	47531.05	1	LEVER AND CABLE ASSEMBLY
3	47539.01	1	CABLE FITTING KIT
4	1800334	1	SPACER PLATE
5	3260073	4	3/4" BONDED SEAL
6	3360091	3	3/4"-1" M-M
7	3460109	2	1" SWEPT ELBOW
8	3360101	1	3/4"-1 1/4" M-M
9	3761004	1	1 1/4" 90° FEMALE INSERT
10	3700188	2	JUBILEE CLIP
11	30.072.08	2	M6 X 65 SKT CAP BOLT
12	2771408	2	M6 FLAT WASHER
13	2770373	2	M6 NYLOCK
14	2770434	2	M10 FLAT WASHER
15	2770469	2	M10 SPRING WASHER
16	2770396	2	M10 X 35 BOLT
17	3760128	1	OUTLET HOSE: 800mm
18	45527.03	1	1" M-FM PIPE
19	3600080	-	VALVE CARTRIDGE
20	3600101S	-	O RING
21	3610081A	-	SPOOL DETENT KIT
22	43542.11	1	HOSE SLEEVE: 700mm - LRG

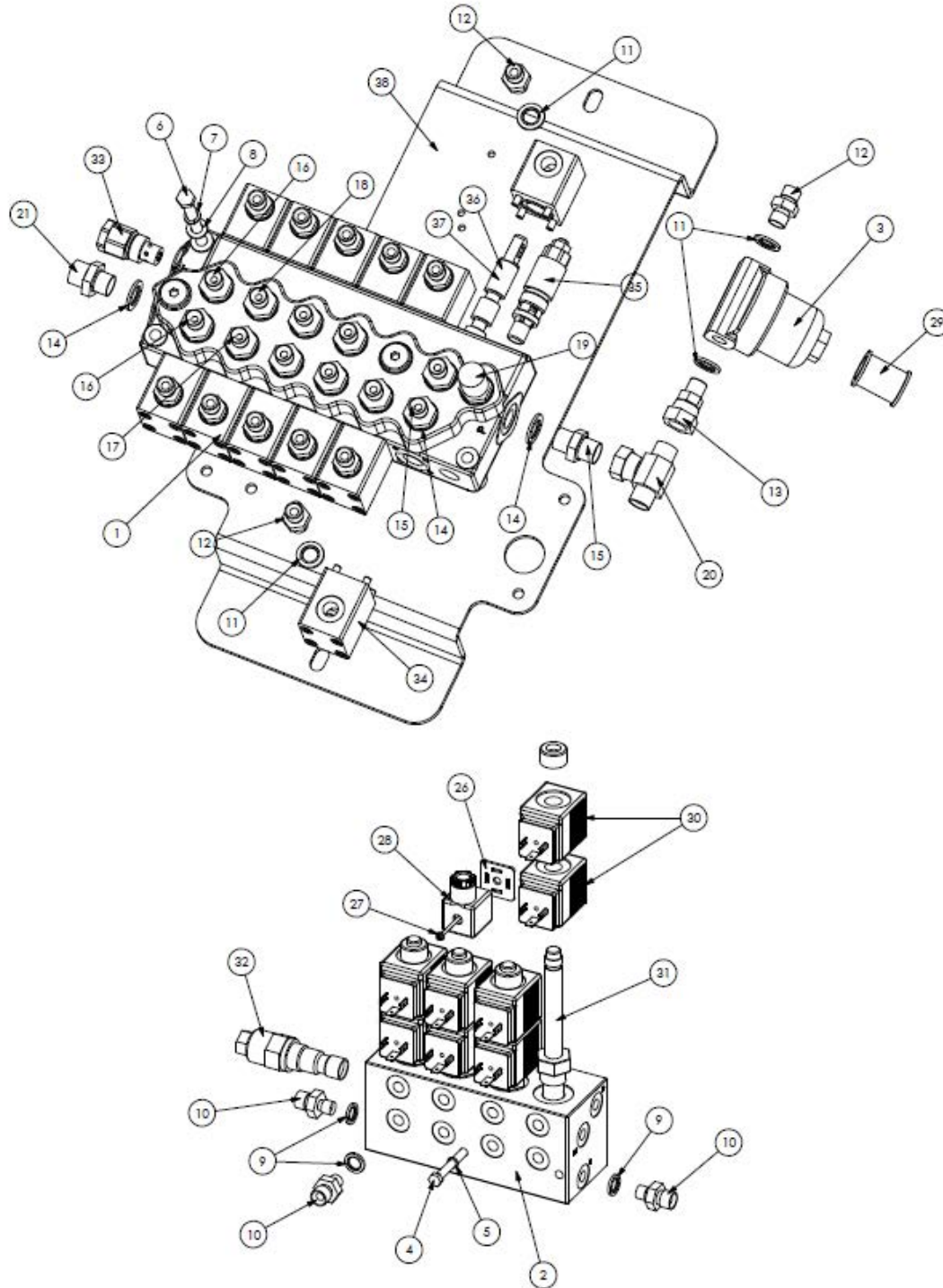
Spearhead TWIGA

CONTROL VALVE: 4 BANK – SI80032.17

CONTROL VALVE: 5 BANK TELE – SI80032.18

CONTROL VALVE: 5 BANK AUTOPILOT – SI80032.19

CONTROL VALVE: 6 BANK TELE + AUTOPILOT – SI80032.20



Spearhead TWIGA

CONTROL VALVE: 4 BANK – SI80032.17

CONTROL VALVE: 5 BANK TELE – SI80032.18

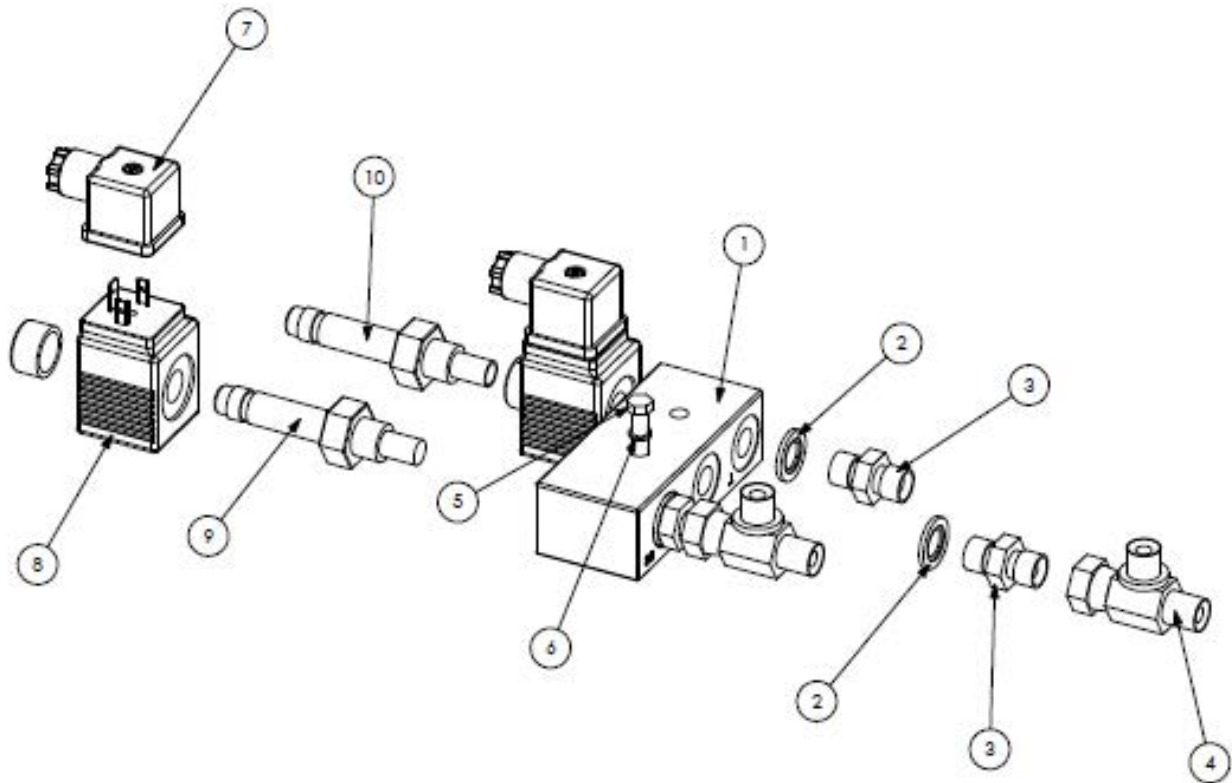
CONTROL VALVE: 5 BANK AUTOPILOT – SI80032.19

CONTROL VALVE: 6 BANK TELE + AUTOPILOT – SI80032.20

REF NO.	PART NO.	32.17	32.18	32.19	32.20	DESCRIPTION
1	3910295	1	-	-	-	4 BANK SD5
1	3910298	-	1	-	-	5 BANK TELE SD5
1	3910291	-	-	1	-	5 BANK AUTOPILOT SD5
1	3910269	-	-	-	1	6 BANK TELE & AUTOPILOT VALVE
2	3610085	1	-	-	-	2 BANK PILOT VALVE
2	3610083	-	1	1	-	3 BANK PILOT VALVE
2	3610099	-	-	-	1	4 BANK PILOT VALVE
3	3900058	1	1	1	1	FILTER
4	30.068.93	2	2	2	2	M6 X 70 BOLT
5	05.282.07	2	2	2	2	M6 SPRING WASHER
6	2770430	2	2	2	2	M8 X 60 BOLT
7	2770433	2	2	2	2	M8 SPRING WASHER
8	2770432	2	2	2	2	M8 FLAT WASHER
9	3260069	8	10	10	12	1/8" BONDED SEAL
10	3250150	8	10	10	12	1/8"-1/4" M-M
11	3260070	10	12	12	14	1/4" BONDED SEAL
12	3360080	10	12	12	14	1/4" M-M
13	3360079	1	1	1	1	3/8" FM - 1/4" M SW
14	3260071	9	11	11	13	3/8" BONDED SEAL
15	3360086	4	6	6	8	1/4"-3/8" M-M
16	3360098	2	2	2	2	1/4"-3/8" M-M R 1.0mm
17	3360107	1	1	1	1	1/4"-3/8" M-M R 1.5mm
18	3360104	1	1	1	1	1/4"-3/8" M-M R 2.0mm
19	3360111	1	1	1	1	3/8" TEST PORT
20	3460099	1	1	1	1	3/8" M-FM-M TEE
21	3360088	1	1	1	1	3/8"-1/2" M-M
22	3760517	4	4	4	4	JOYSTICK HOSE: 1/4" X 3900mm
23	3760518	2	2	2	2	JOYSTICK HOSE: 1/4" X 4000mm
24	3760456	2	3	3	4	LINK HOSE: 1/4" X 210mm
25	3760457	2	3	3	4	LINK HOSE: 1/4" X 410mm
26	07.835.02	4	6	6	8	HIRSCHMANN GASKET
27	07.835.03	4	6	6	8	HIRSCHMANN SCREW
28	3610048	-	-	-	-	HIRSCHMANN CONNECTOR
29	3900059A	-	-	-	-	FILTER ELEMENT - 35mm
30	3610052	-	-	-	-	COIL
31	3610051	-	-	-	-	SPOOL
32	3610055	-	-	-	-	CARTRIDGE
33	5770300	-	-	-	-	CARTRIDGE
34	3610003	-	-	-	-	HYD. PROP. KIT
35	3600093	-	-	-	-	RELIEF VALVE CARTRIDGE
36	3610096	-	-	-	-	DOUBLE ACTING SPOOL
37	3610098	-	-	-	-	SINGLE ACTING SPOOL
38	180193	1	1	1	1	VALVE MOUNT PLATE
39	3750561	1	1	1	1	JOYSTICK HOSE KIT

Spearhead TWIGA

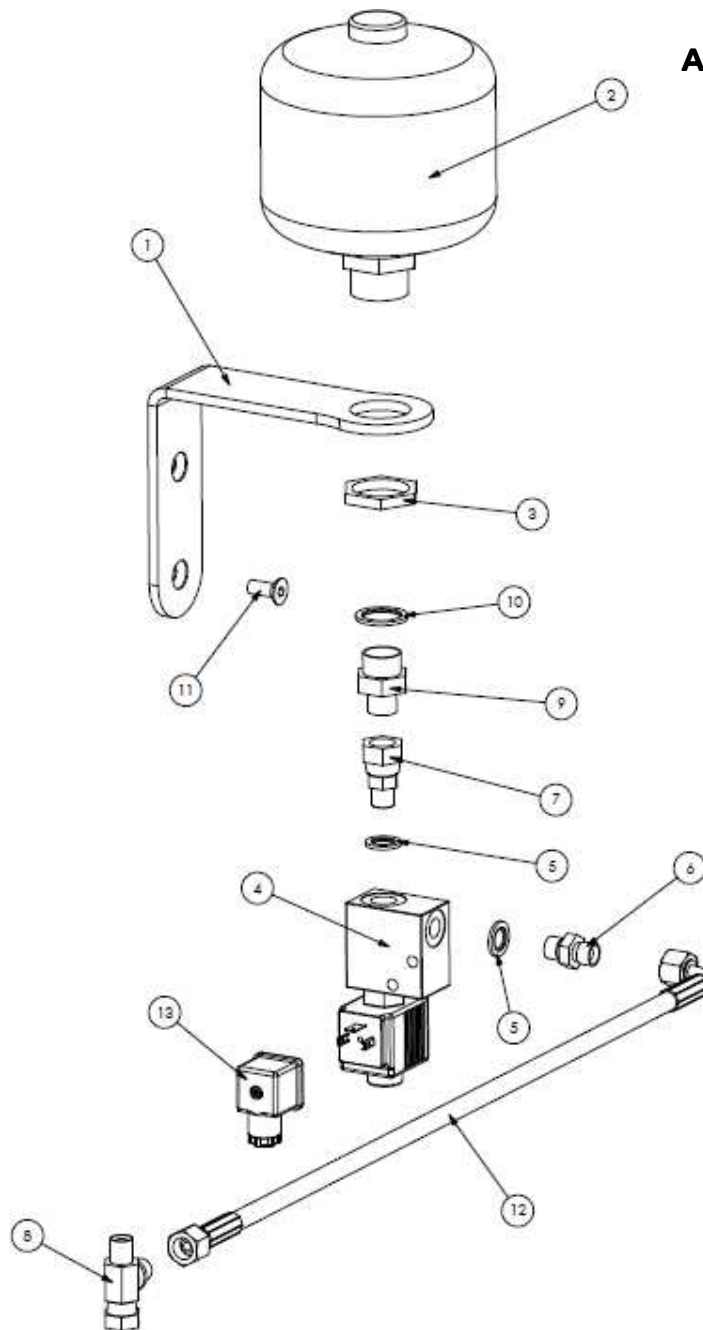
HEAD FLOAT VALVE – SI80032.2I



REF NO.	PART NO.	QTY.	DESCRIPTION
1	3600132	1	HEAD FLOAT VALVE
2	3260070	3	1/4" BONDED SEAL
3	3360080	3	1/4" M-M
4	3460300	2	1/4" FM/M/M TEE
5	2770485	2	M6 X 40 BOLT
6	05.282.07	2	M6 SPRING WASHER
7	3760121	1	HOSE: 1/4" X 1240mm
8	3760122	2	HOSE: 1/4" X 330mm
9	3610048	-	DIN CONNECTOR
10	3610030A	-	COIL
11	3610032A	-	DOUBLE VALVE
12	3600142	-	SINGLE VALVE

Spearhead TWIGA

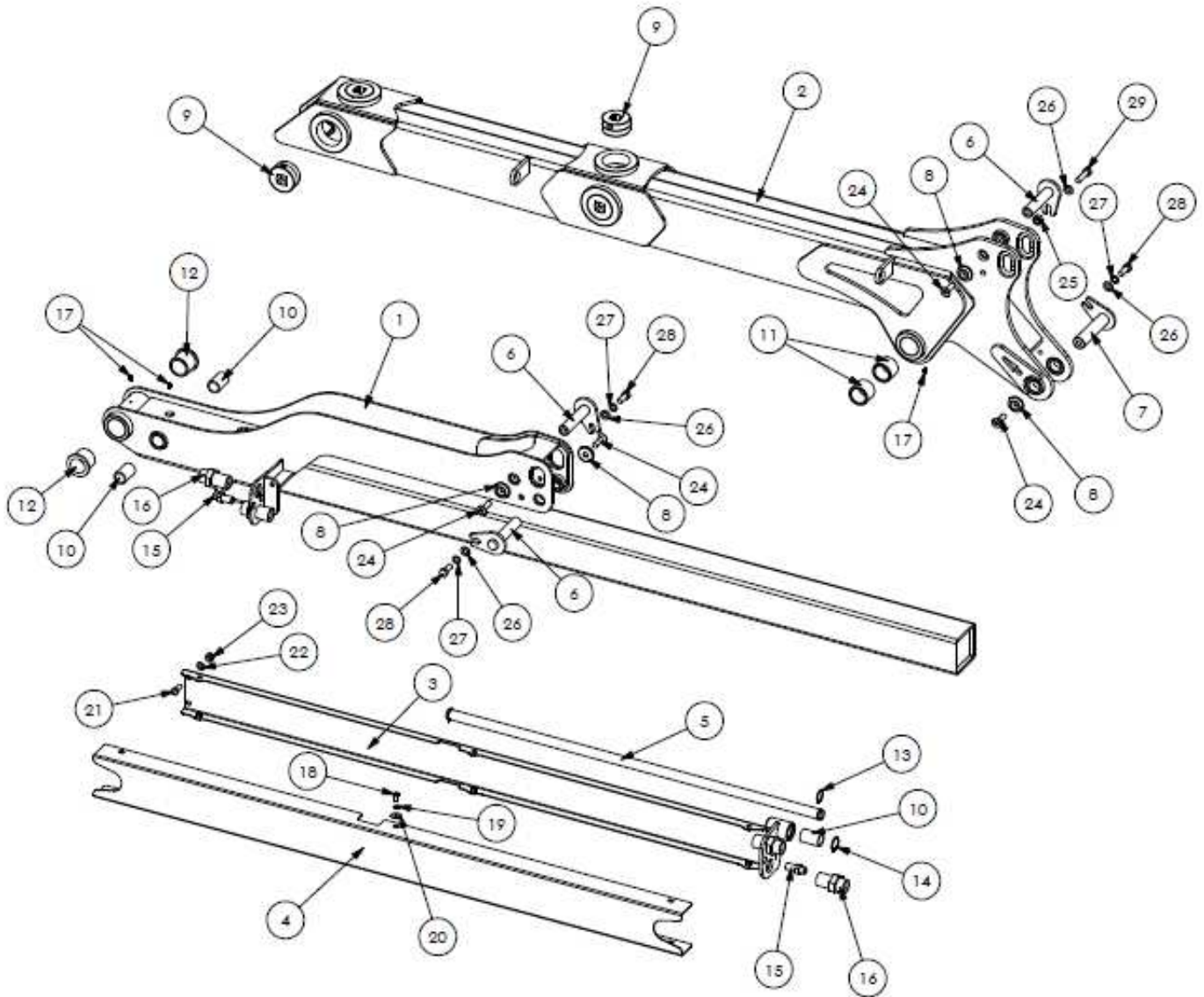
ARM FLOAT – SI80032.22



REF NO.	PART NO.	QTY.	DESCRIPTION
1	180917	1	BRACKET
2	3900071	1	ACCUMULATOR BOTTLE - 32 Bar
3	8126035	1	M33 NUT
4	3610053	1	ELECTRONIC VALVE
5	3260070	2	1/4" BONDED SEAL
6	3360080	1	1/4" M-M
7	3360079	1	1/4"-3/8" M-FM SW
8	3460300	1	1/4" FM/M/M TEE
9	G2410380	1	3/8"-M22 M-M
10	8650322	1	M22 BONDED SEAL
11	2770435	2	M8 X 20 CSK SCREW
12	3760129	1	HOSE
13	3610048	-	DIN PLUG

Spearhead TWIGA

655T LH TELE DIPPER ARM – S180032.24
655T RH TELE DIPPER ARM – S180032.46



Spearhead TWIGA

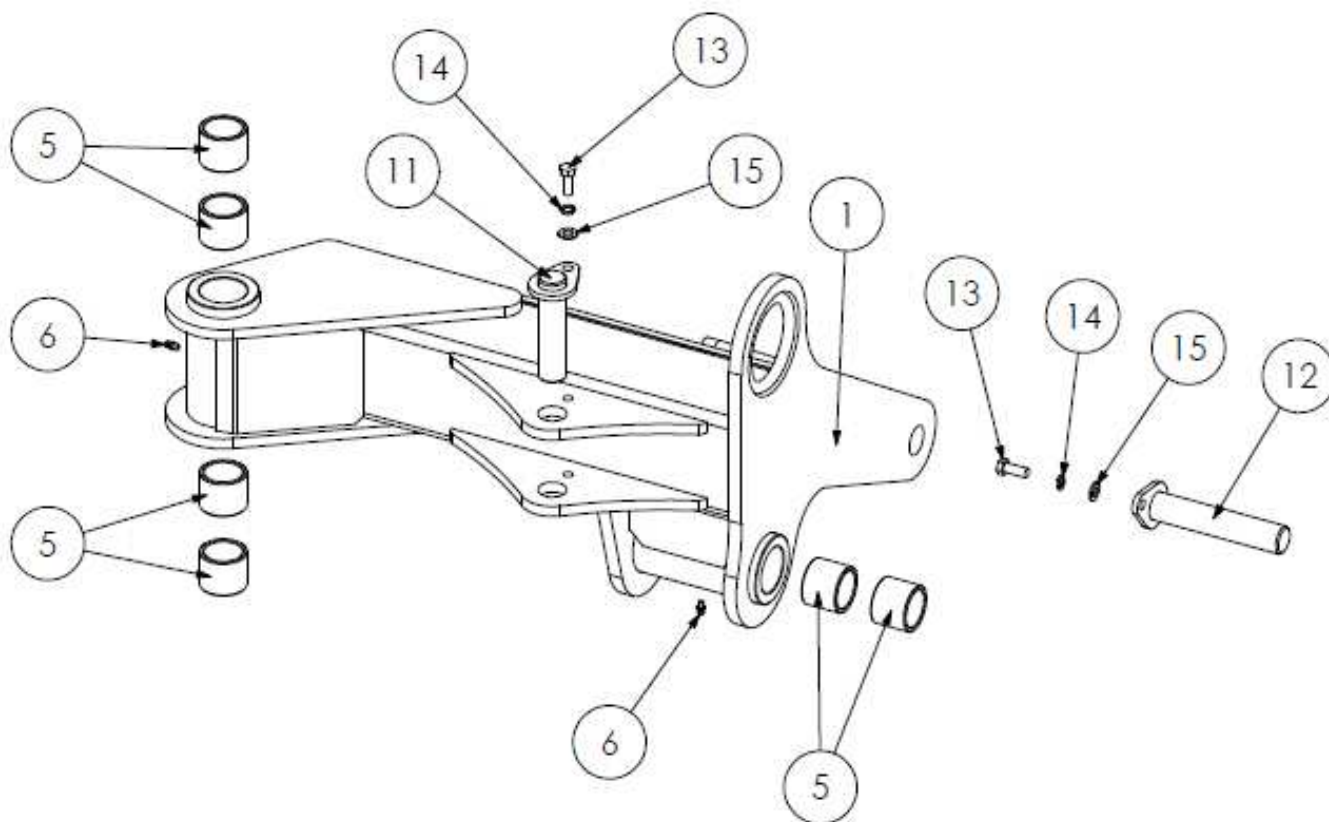
655T LH TELE DIPPER ARM – S180032.24
655T RH TELE DIPPER ARM – S180032.46

REF NO.	PART NO.	QTY.	DESCRIPTION
1	1800115	1	LH INNER DIPPER ARM
1	1800133	1	RH INNER DIPPER ARM
2	1800134	1	LH OUTER DIPPER ARM
2	1800135	1	RH OUTER DIPPER ARM
3	1800329	1	LH DIPPER ARM HOSE CHANNEL
3	1800332	1	RH DIPPER ARM HOSE CHANNEL
4	1800330	1	HOSE GUARD
5	1778303	1	HOSE GUARD RAIL
6	1777928A	3	PEAR PIN: 25.4 X 113 mm
7	1777556	1	PEAR PIN: 30 X 130 mm
8	1777209	4	RETAINING WASHER - 40mm
9	4600121A	9	WEAR PAD
10	4600124	3	BUSH
11	4600125	4	BUSH
12	4600127-A	2	BUSH
13	2771111	2	EXTERNAL CIRCLIP
14	2771112	1	INTERNAL CIRCLIP
15	3700228	2	3/8 BULKHEAD
16	3460115	4	1" BULKHEAD
17	2770467	3	M6 ST GREASE NIPPLE
18	2770253	6	M8 X 16 SKT BUTTON BOLT
19	05.283.01	6	M8 SHAKE PROOF WASHER
20	2770244	6	M8 REPAIR WASHER
21	2770407	4	M10 X 25 BOLT
22	2770434	4	M10 FLAT WASHER
23	2770412	4	M10 NYLOCK
24	2770398	4	M12 X 40 SKT CSK SCREW
25	2770417	1	M12 X NYLOCK
26	2770436	4	M12 FLAT WASHER
27	2770442	3	M12 SPRING WASHER
28	2770420	3	M12 X 30 BOLT
29	2770397	1	M12 X 45 BOLT

Spearhead TWIGA

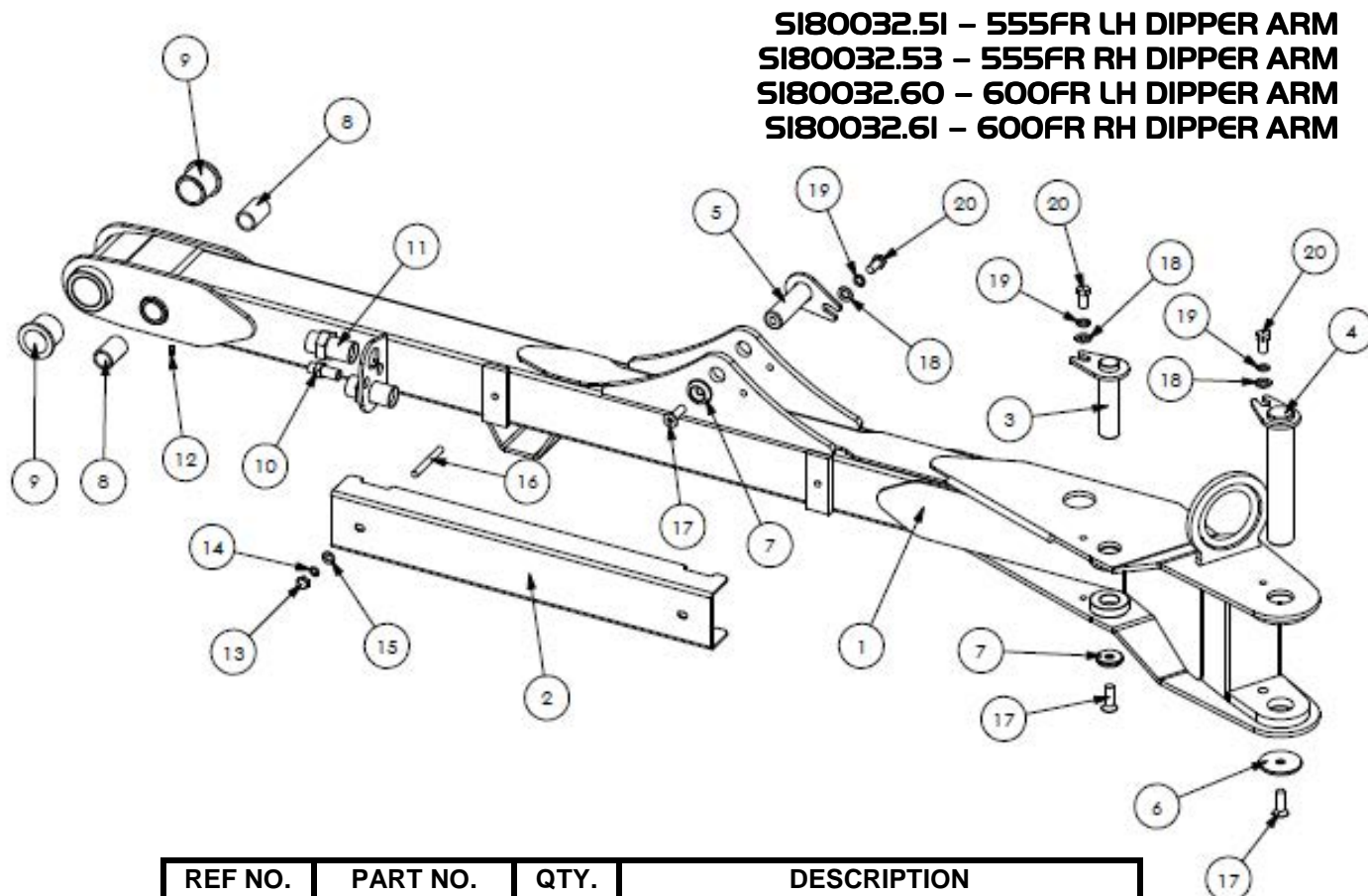
SI80032.50 – 555FR LH KNUCKLE

SI80032.52 – 555FR RH KNUCKLE



REF NO.	PART NO.	QTY.	DESCRIPTION
1	180944	1	LH KNUCKLE
1	180945	1	RH KNUCKLE
5	4600125	8	BUSH
6	2770467	2	M6 ST GREASE NIPPLE
11	1782106	1	PEAR PIN: 30 X 106mm
12	1782130	1	PEAR PIN: 30 X 150mm
13	2770407	2	M10 X 25 BOLT
14	2770469	2	M10 SPRING WASHER
15	2770434	2	M10 FLAT WASHER

Spearhead TWIGA

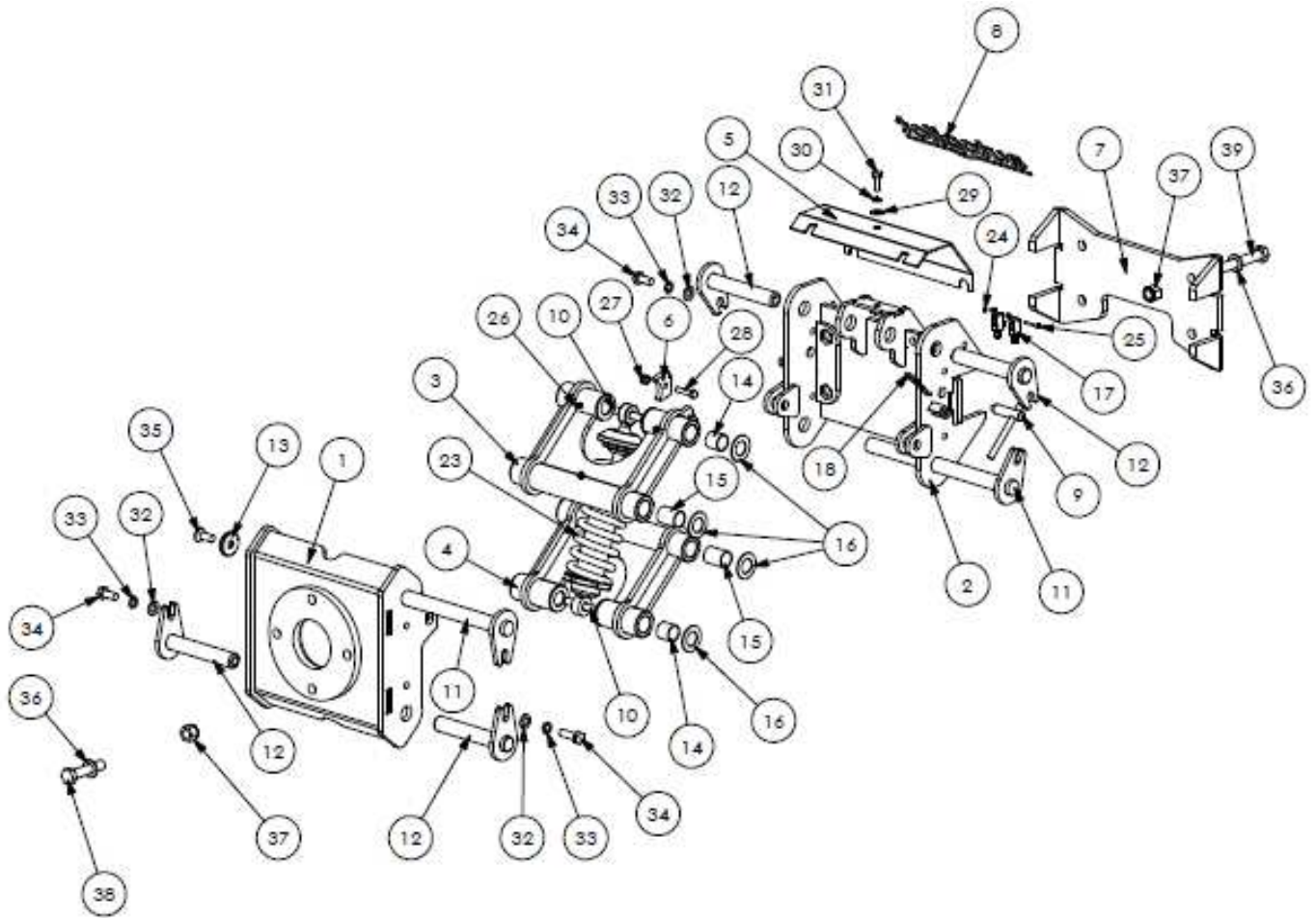


SI80032.5I - 555FR LH DIPPER ARM
SI80032.53 - 555FR RH DIPPER ARM
SI80032.60 - 600FR LH DIPPER ARM
SI80032.6I - 600FR RH DIPPER ARM

REF NO.	PART NO.	QTY.	DESCRIPTION
1	180119	1	LH 555FR DIPPER ARM
1	180121	1	RH 555FR DIPPER ARM
1	180175	1	LH 600FR DIPPER ARM
1	180177	1	RH 600FR DIPPER ARM
2	180120	1	555FR HOSE GUARD
2	180176	1	600FR HOSE GUARD
3	1777468	1	PEAR PIN: 30 X 114 mm
4	1782083	1	PEAR PIN: 40 X 216 mm
5	1778038	1	PEAR PIN: 25.4 X 98 mm
6	1777208	1	RETAINING WASHER - 65mm
7	1777209	2	RETAINING WASHER - 40mm
8	4600124	2	BUSH
9	4600127-A	2	BUSH
10	3700228	1	3/8 BULKHEAD
11	3460115	2	1" BULKHEAD
12	2770467	1	M6 ST GREASE NIPPLE
13	9100025	2	M10 DOMED NUT
14	05.283.02	2	M10 SHAKE PROOF WASHER
15	2770434	2	M10 FLAT WASHER
16	04.282.09	2	M10 X 85 STUD
17	2770506	3	M12 X 30 SKT CSK SCREW
18	2770436	3	M12 FLAT WASHER
19	2770442	3	M12 SPRING WASHER
20	2770484	3	M12 X 25 BOLT

Spearhead TWIGA

AUTOPILOT – SI80032.55



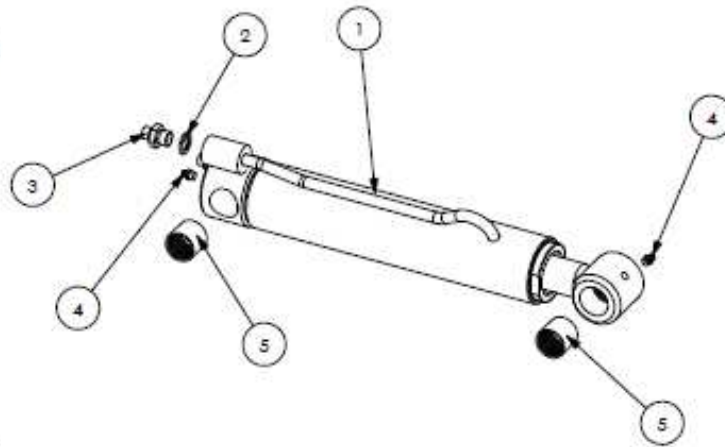
Spearhead TWIGA

AUTOPILOT – SI80032.55

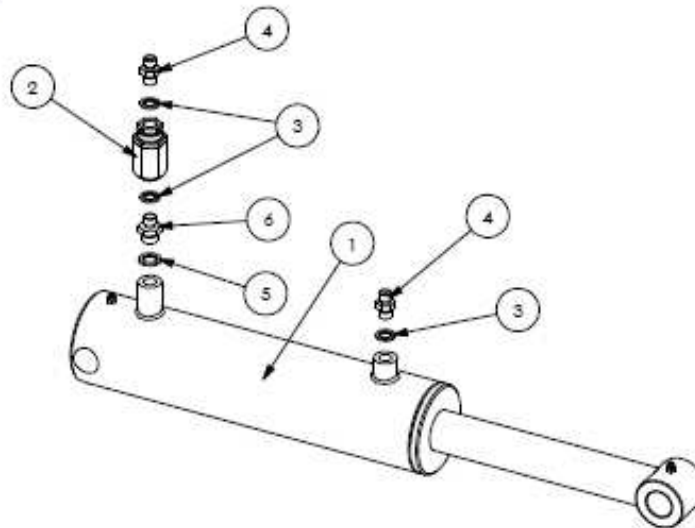
REF NO.	PART NO.	QTY.	DESCRIPTION
1	1777816A	1	BACK PLATE
2	1777817A	1	FRONT PLATE
3	1777818A	1	FLOAT LINK + CAM
4	1777818B	1	FLOAT LINK
5	1777748A	1	CAM GUARD
6	1777848A	1	CAM
7	1777325B	1	CLAMP PLATE
8	8770696	1	DECAL
9	1777749	2	LOCKING PIN
10	1777822	2	PIN
11	1777941	2	PEAR PIN: 25.4 X 310 mm
12	1777942	4	PEAR PIN: 25.4 X 145 mm
13	1777209	2	RETAINING WASHER - 40mm
14	4600417	8	BUSH - SHORT
15	4600418	4	BUSH - LONG
16	4600419	8	THRUST WASHER
17	3910275	2	SWITCH
18	6310194	2	R CLIP
19	8770600	1	SHOCK ABSORBER
20	8770600/1	0	TOP COLLET
21	8770600/2	0	THREADED COLLET
22	8770600/3	0	SPHERICAL BEARING
23	8770601	1	SPRING
24	2770233	4	M3 FULL NUT
25	2770237	2	M3 X 35 BOLT
26	2770467	6	M6 ST GREASE NIPPLE
27	2770416	1	M8 NYLOCK
28	2770488	1	M8 X 35 BOLT
29	2770434	1	M10 FLAT WASHER
30	2770469	1	M10 SPRING WASHER
31	2770407	1	M10 X 25 BOLT
32	2770436	6	M12 FLAT WASHER
33	2770442	6	M12 SPRING WASHER
34	2770484	6	M12 X 25 BOLT
35	2770506	2	M12 X 30 SKT CSK SCREW
36	2770454	8	M16 FLAT WASHER
37	2770447	8	M16 NYLOCK
38	05.264.40	4	M16 X 70 BOLT
39	2770346	4	M16 X 140 BOLT
40	8770655	1	AUTOPILOT LOOM
41	3760123	1	HOSE: 1/4" X 430mm
42	3460101	1	1/4" M/M/FM TEE
43	3760456	1	HOSE: 1/4" X 210mm
44	3760457	1	HOSE: 1/4" X 410mm

Spearhead TWIGA

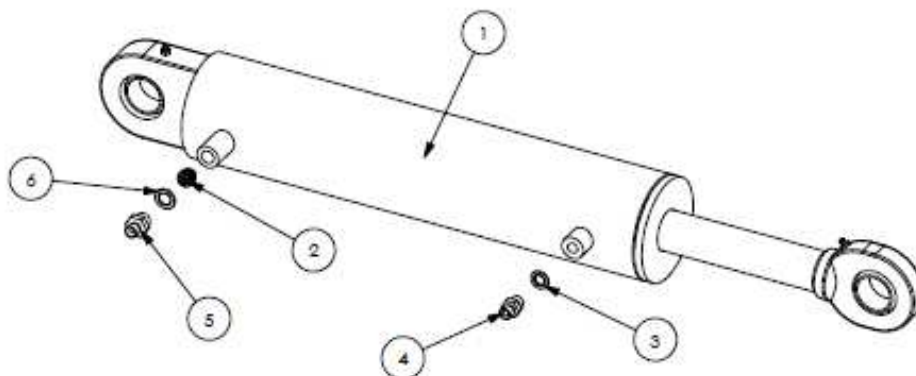
S180032.25



S180032.26



S180032.27



Spearhead TWIGA

FORWARD REACH RAM – SI80032.25

REF NO.	PART NO.	QTY.	DESCRIPTION
1	3580691	1	FORWARD REACH ARM
2	3260071	2	3/8" BONDED SEAL
3	3360083	2	3/8"-1/4" M-M
4	42654.01	4	BUSH
5	01.070.04	-	1/8" GREASE NIPPLE
6	42664.08	-	SEAL KIT

SLEW RAM – SI80032.26

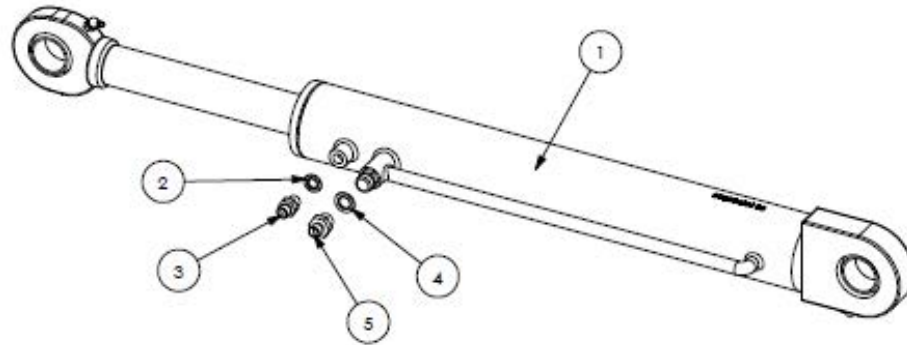
REF NO.	PART NO.	QTY.	DESCRIPTION
1	3580666	1	SLEW RAM
2	3900010	1	VARIABLE RESTRICTOR
3	3260070	3	1/4" BONDED SEAL
4	3360080	2	1/4" M-M
5	3260071	1	3/8" BONDED SEAL
6	3360083	1	3/8"-1/4" M-M
7	3580666.01	-	SEAL KIT

LIFT RAM – SI80032.27

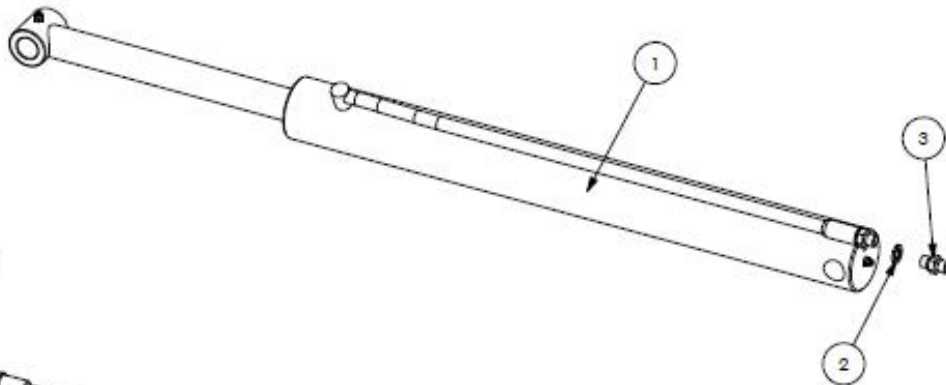
REF NO.	PART NO.	QTY.	DESCRIPTION
1	3580660B	1	LIFT RAM
2	3600118	1	HOSE BURST
3	3260070	1	1/4" BONDED SEAL
4	3360080	1	1/4" M-M
5	3360083	1	3/8"-1/4" M-M
6	3260071	1	3/8" BONDED SEAL
7	3570668HP	-	SEAL KIT

Spearhead TWIGA

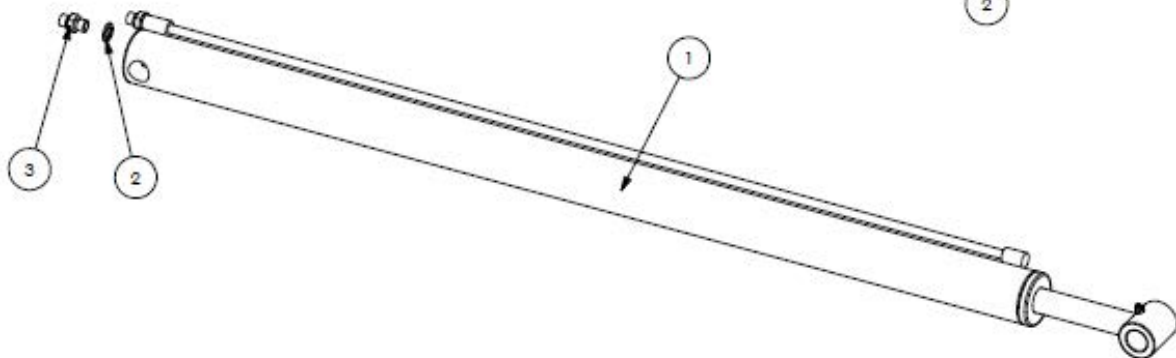
S180032.28



S180032.29



S180032.30



Spearhead TWIGA

REACH RAM – SI80032.28

REF NO.	PART NO.	QTY.	DESCRIPTION
1	3580640H	1	DIPPER RAM
2	3260070	1	1/4" BONDED SEAL
3	3360080	1	1/4" M-M
4	3260071	1	3/8" BONDED SEAL
5	3360083	1	3/8"-1/4" M-M
6	3580640H.01	-	SEAL KIT

HEAD RAM – SI80032.29

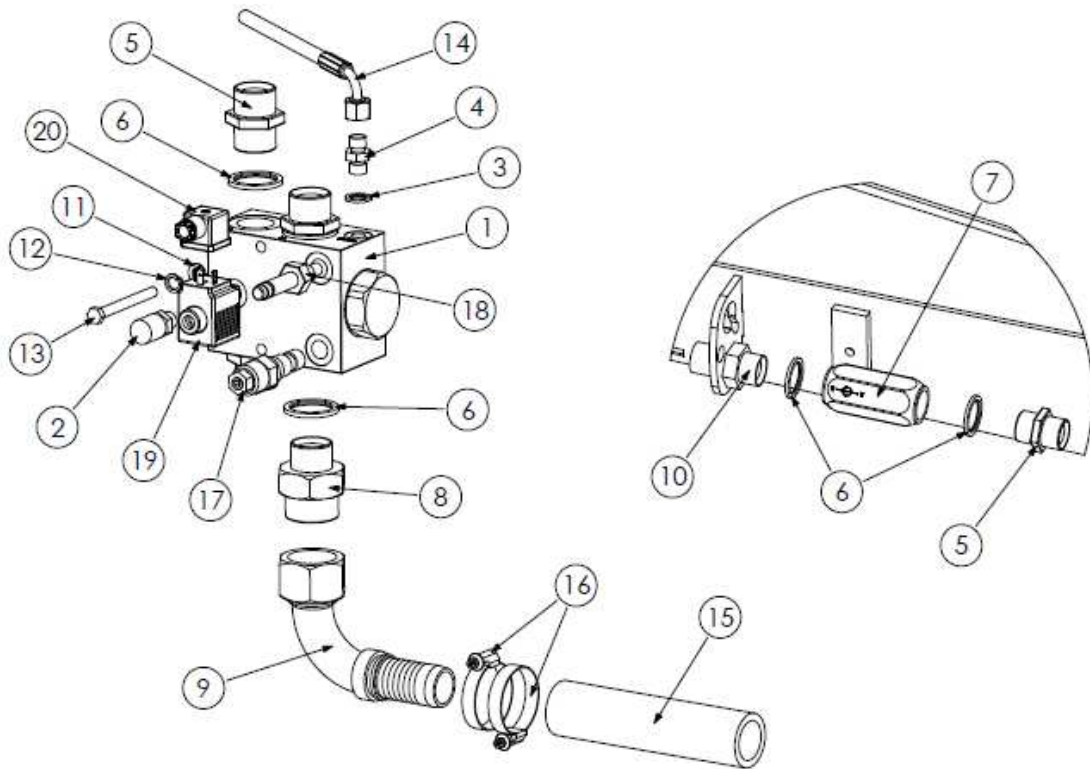
REF NO.	PART NO.	QTY.	DESCRIPTION
1	3580636	1	HEAD RAM
2	3260070	2	1/4" BONDED SEAL
3	3360080	2	1/4" M-M
4	3570666HP	-	SEAL KIT

TELE RAM – SI80032.30

REF NO.	PART NO.	QTY.	DESCRIPTION
1	3580653A	1	TELE RAM
2	3260070	2	1/4" BONDED SEAL
3	3360080	2	1/4" M-M
4	3570665HP	-	SEAL KIT

Spearhead TWIGA

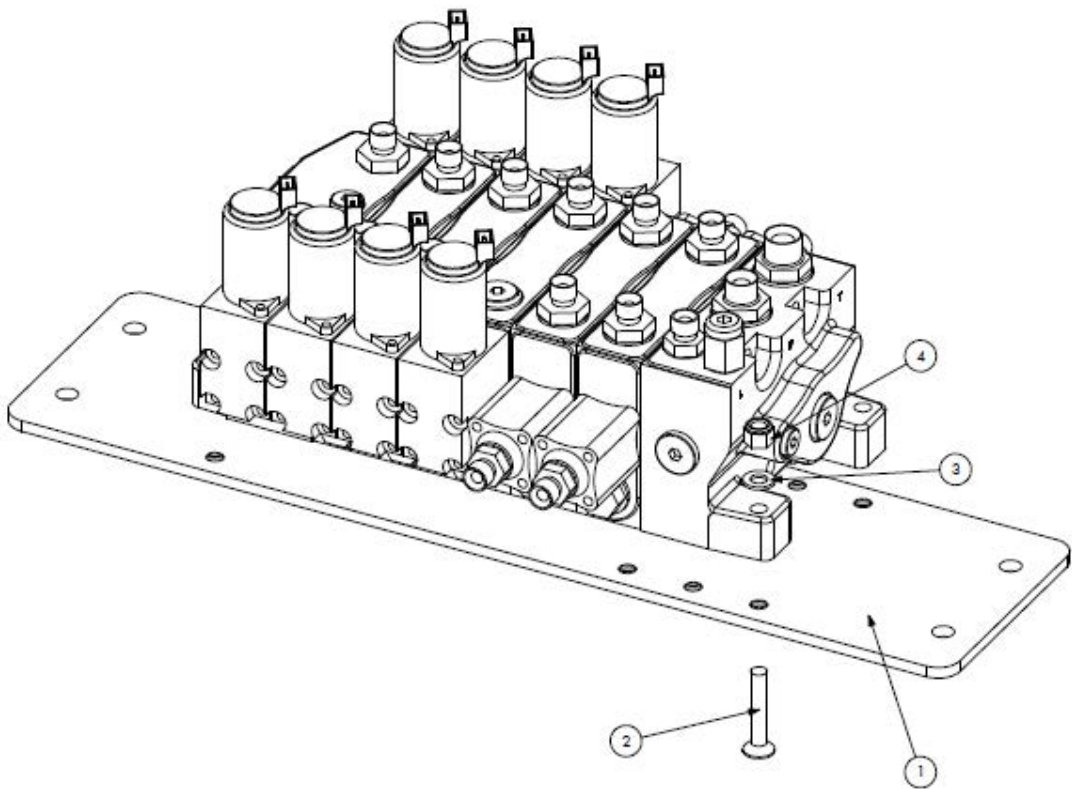
ELECTRIC ROTOR VALVE - 5180032.64



REF NO.	PART NO.	QTY.	DESCRIPTION
1	3600099A	1	ROTOR VALVE
2	3360110	1	1/4" TEST PORT
3	3260070	1	1/4" BONDED SEAL
4	3360100	1	1/4" M-M R1.5
5	3260074	4	1" M-M
6	3360092	6	1" BONDED SEAL
7	3600089	1	CHECK VALVE
8	3360078	1	1" M X 1 1/4" M
9	3761004	1	1 1/4" FM 90° HOSE TAIL
10	3460115	-	1" BULKHEAD
11	2770432	2	M8 FLAT WASHER
12	2770433	2	M8 SPRING WASHER
13	2772289	2	M8 X 80 BOLT
14	3760127	1	HOSE: 1/4" X 2000mm
15	3760124	1	RETURNS HOSE: 680mm
16	3700188	2	JUBILEE CLIP
17	3600144A	-	RELIEF VALVE CARTRIDGE
18	3600142A	-	SINGLE POPPET VALVE
19	3610030A	-	COIL
20	3610048	-	DIN CONNECTOR

Spearhead TWIGA

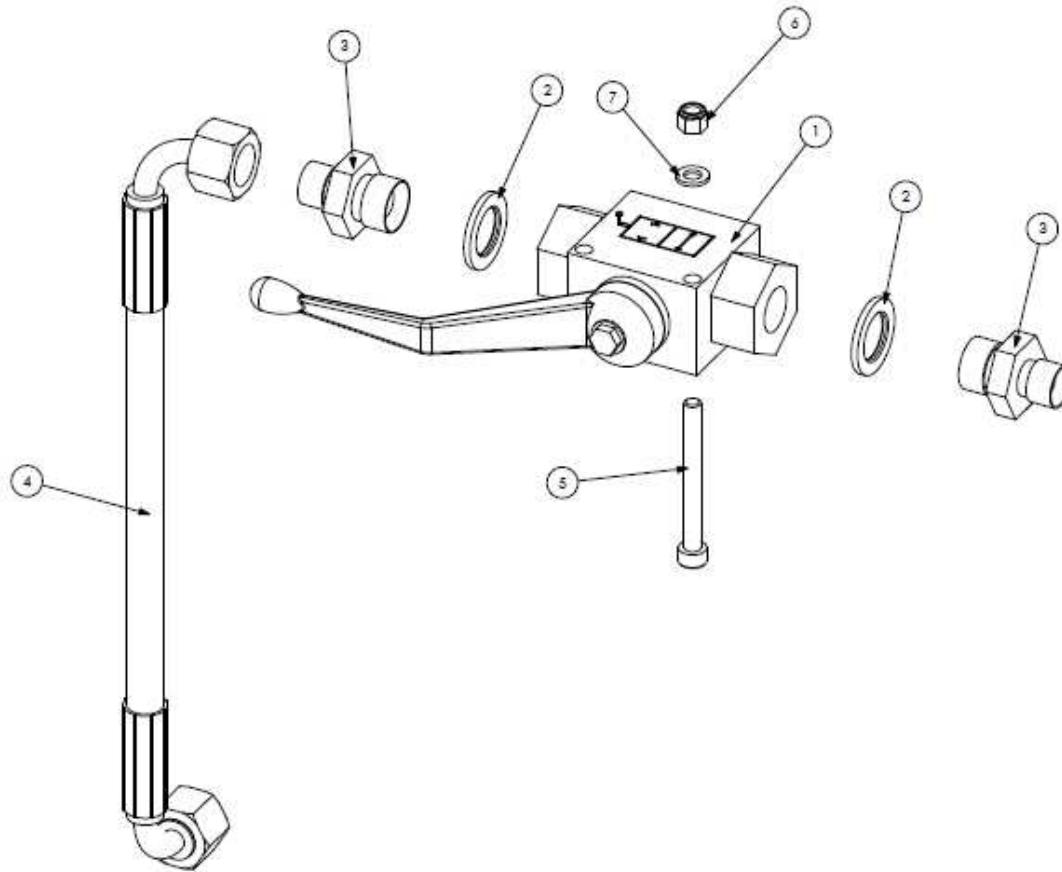
SDS100 VALVE MOUNTING PLATE - SI80032.65



REF NO.	PART NO.	QTY.	DESCRIPTION
1	180192	1	MOUNT PLATE
2	2770637	4	M8 X 45 SKT CSK SCREW
3	2770432	4	M8 FLAT WASHER
4	2770416	4	M8 NYLOCK

Spearhead TWIGA

LIFT RAM SHUT OFF VALVE – 5180028.86



REF NO.	PART NO.	QTY.	DESCRIPTION
1	3600129	1	2 WAY BALL VALVE
2	3260071	2	3/8" BONDED SEAL
3	3360083	2	1/4"-3/8" M-M
4	3760116	1	1/4" HOSE - 250mm
5	9243102	2	M5 X 50 SKT CAP SCREW
6	2770394	2	M5 NYLOCK
7	2770391	2	M5 FLAT WASHER
8	8770416	1	DECAL

Spearhead TWIGA

555 DECALS – SI80032.35
600 DECALS – SI80032.36
655T DECALS – SI80032.37
555FR DECALS - SI80032.54
600FR DECALS - SI80032.63

8770376 

8770371 

8770374 

8770423 

8770424 

8770663 

8770429 

8770433 

8770418



8770417

8770422



8770421

Spearhead TWIGA

SAFETY DECALS – S180028.49



8770307

Recommended P.T.O.
speed 540 r.p.m.

8770305



8770322



8770363



8770367



8770306



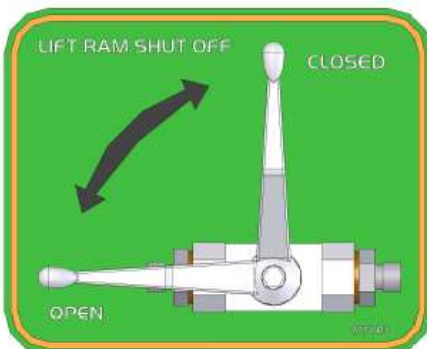
8770358



8770362



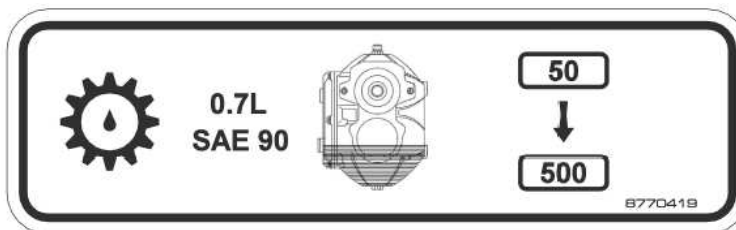
8770359



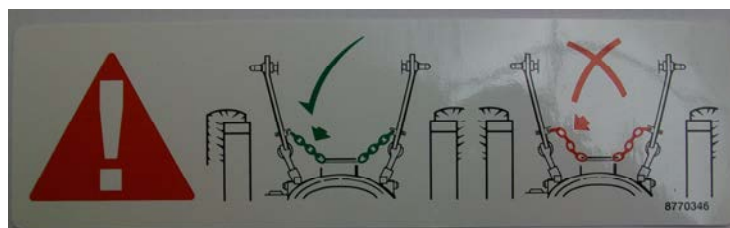
8770416



09.846.02



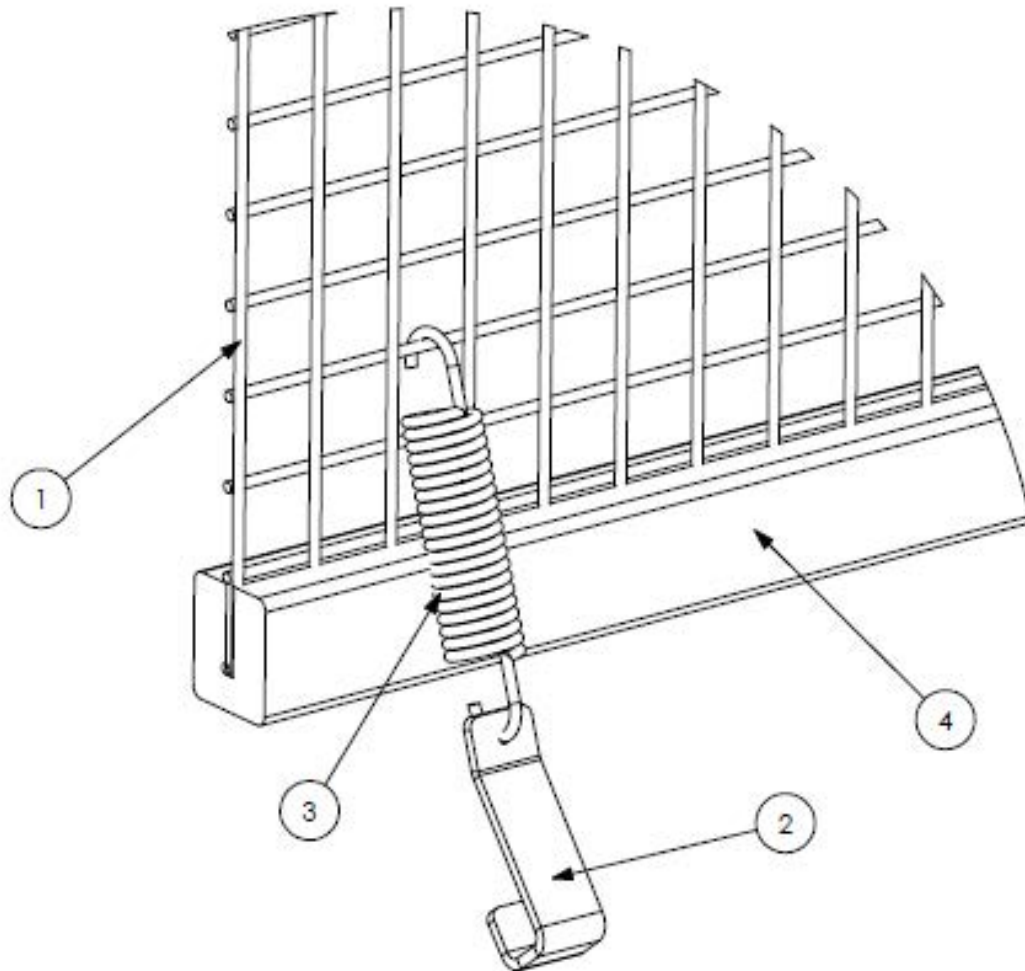
8770419



8770346

Spearhead TWIGA

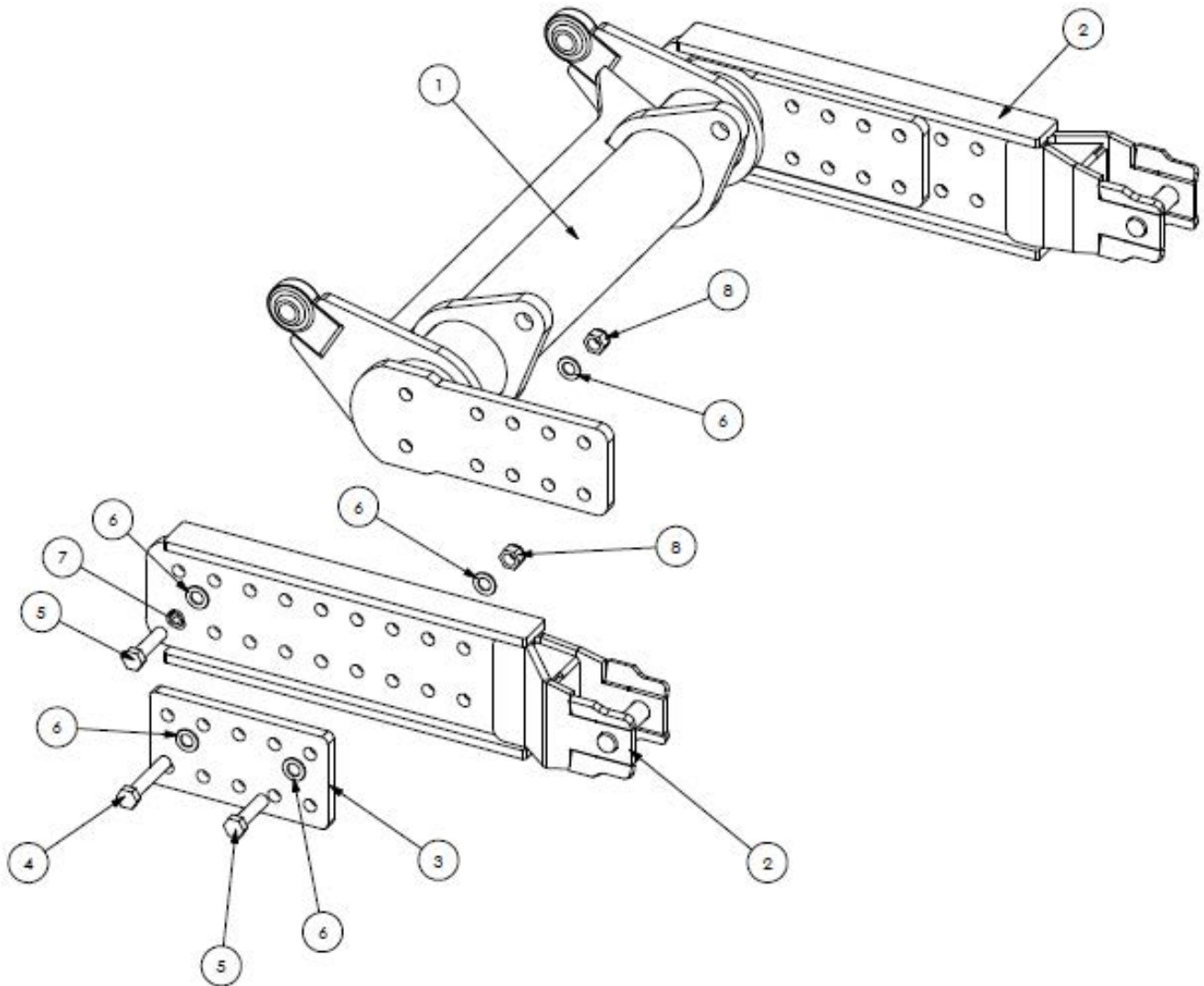
CAB GUARD KIT – SI80028.53



REF NO.	PART NO.	QTY.	DESCRIPTION
	OPT0603	1	CAB GUARD KIT
1	1777140	2	MESH PANEL
2	41745.01	10	HOOK
3	6310209	10	SPRING
4	8550134	1	FOAM - 5M

Spearhead TWIGA

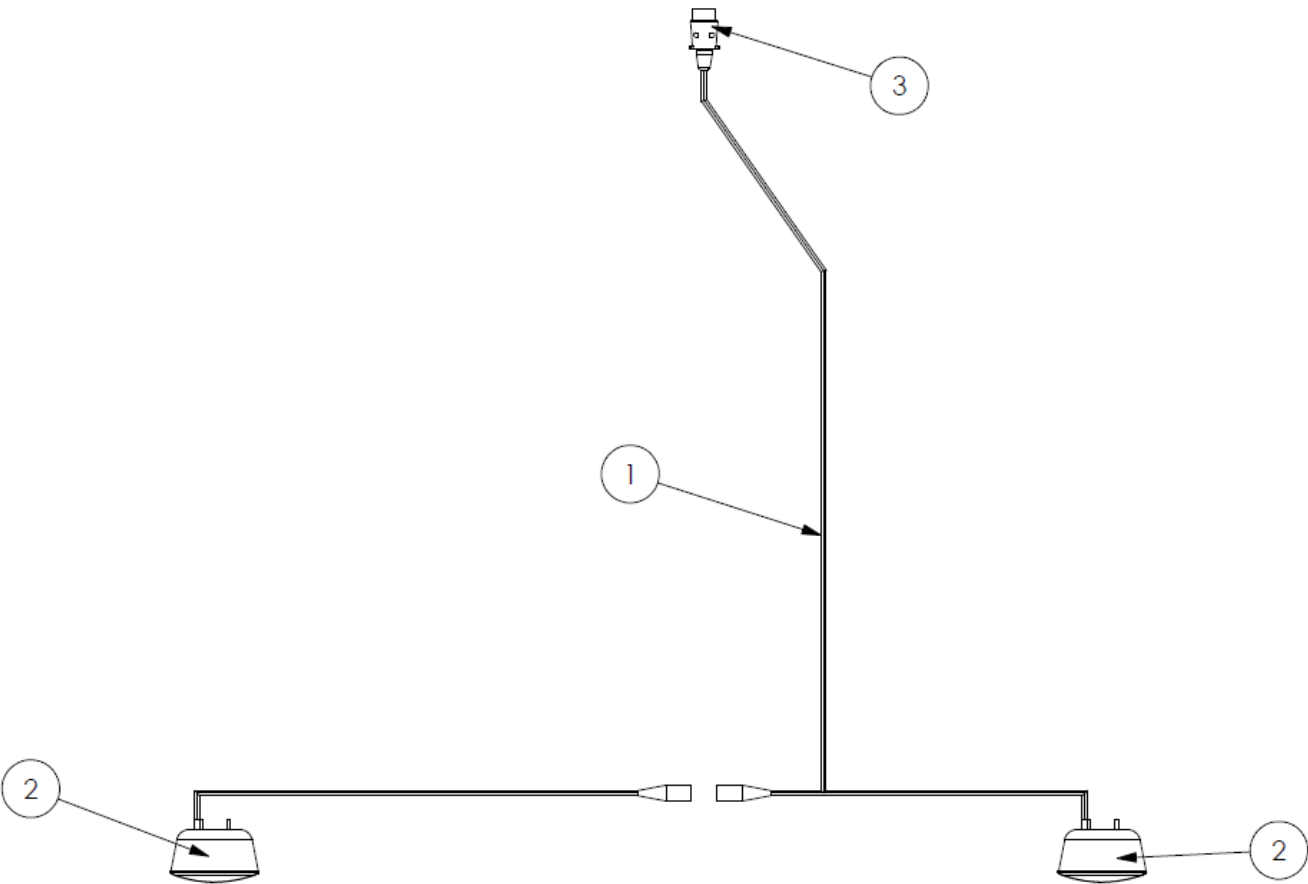
AXLE MOUNT SUB FRAME KIT – OPT0201



REF NO.	PART NO.	QTY.	DESCRIPTION
	OPT0201	1	AXLE MOUNT SUB FRAME KIT
1	1777030A	1	SUB FRAME
2	1777032A	2	ARM
3	1777035	2	BRACE PLATE
4	05.292.44	16	M20 X 110 BOLT
5	2770550	8	M20 X 80
6	2770517	44	M20 FLAT WASHER
7	05.282.05	4	M20 SPRING WASHER
8	2770409	20	M20 NYLOCK

Spearhead TWIGA

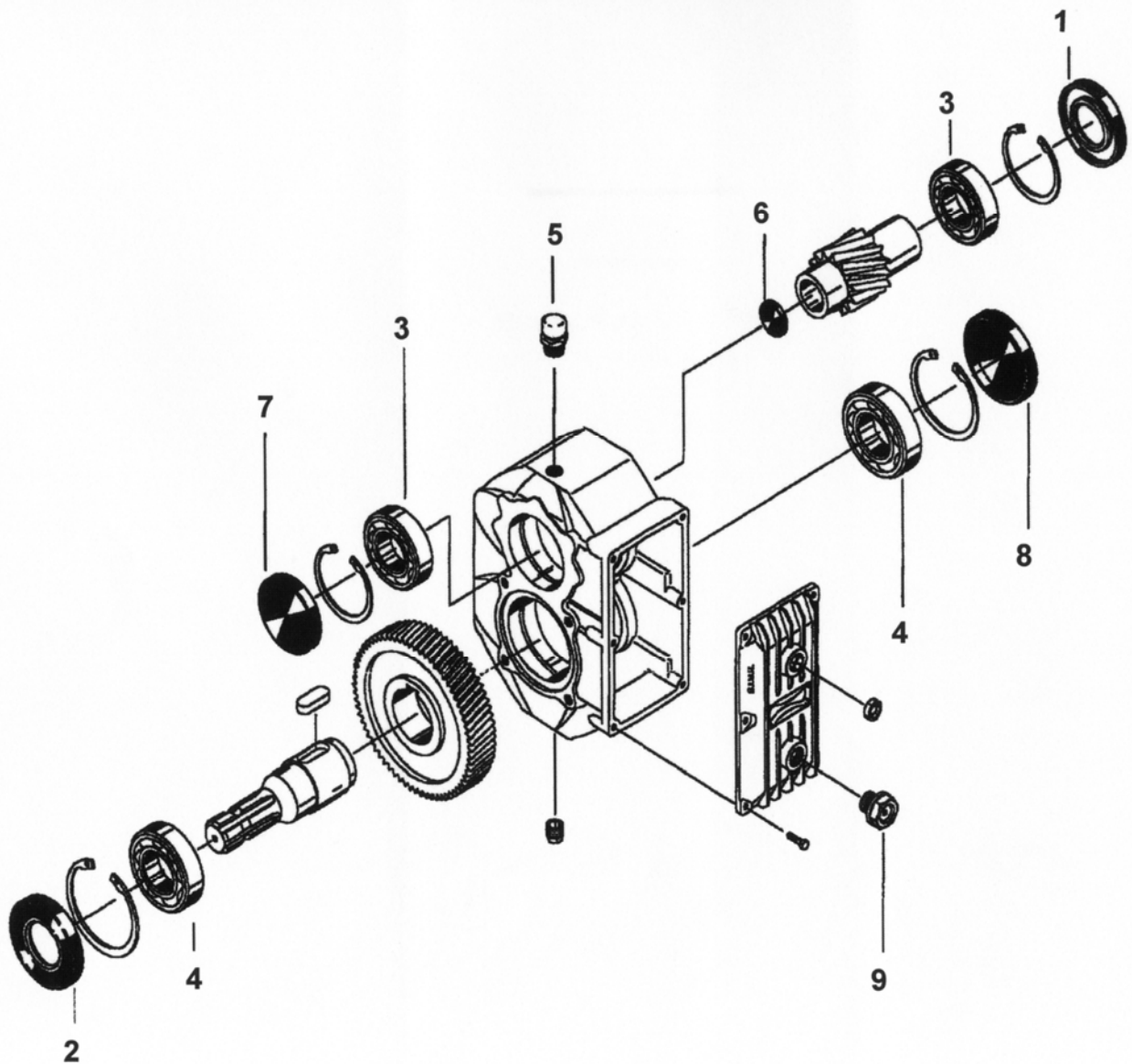
LIGHT CIRCUIT – SI80032.38



REF NO.	PART NO.	QTY.	DESCRIPTION
1	8770656	1	LIGHT LOOM
2	8770658	-	LIGHT UNIT
3	8770657	-	7 PIN PLUG

Spearhead TWIGA

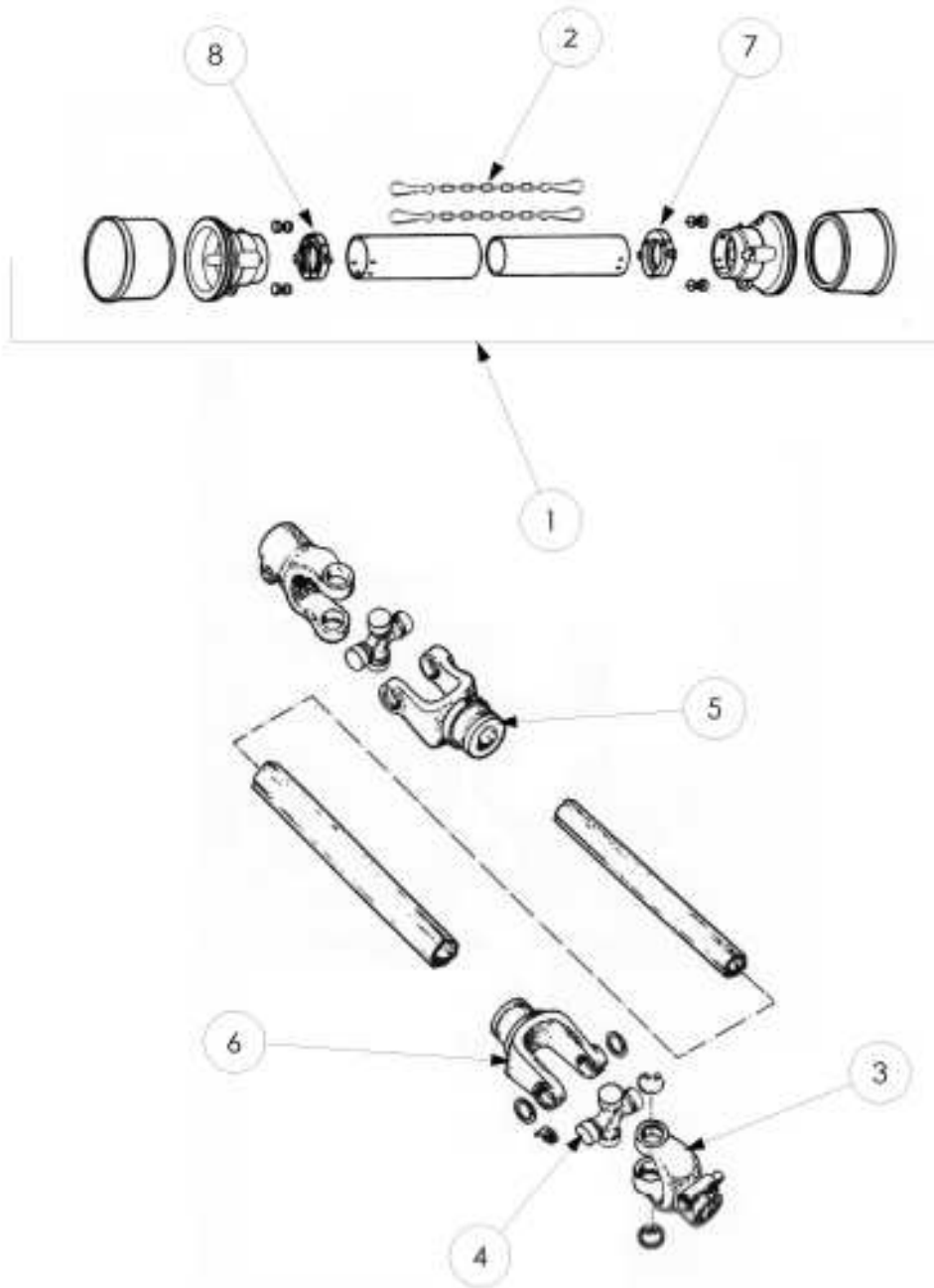
GEARBOX ASSEMBLY



REF NO.	PART NO.	QTY.	DESCRIPTION
	3151080	-	GEARBOX ASSEMBLY
1	4771119	-	OIL SEAL
2	5771613	-	OIL SEAL
3	4771605	-	BEARING
4	4771607	-	BEARING
5	5771124	-	PLUG
6	5771123	-	END CAP
7	5771615	-	END CAP
8	5771614	-	END CAP
9	5771122	-	LEVEL GAUGE

Spearhead TWIGA

PTO ASSEMBLY



REF NO.	PART NO.	QTY.	DESCRIPTION
	5770084C	-	PTO ASSEMBLY
1	5772263	-	GUARD
2	5771020	-	CHAIN
3	5772240	-	YOKE – 6 SPLINE
3	5772241	-	YOKE – 21 SPLINE
4	5772242	-	CROSS JOURNAL
5	5772244	-	INNER YOKE
6	5772264	-	OUTER YOKE
7	4770815	-	INNER BEARING
8	4770814	-	OUTER BEARING

Spearhead Machinery Ltd
Green View
Salford Priors
Evesham
Worcestershire
WR11 8SW
Tel: 01789 491860
Fax: 01789 778683
www.spearheadmachinery.com
enquiries@spearheadmachinery.com